

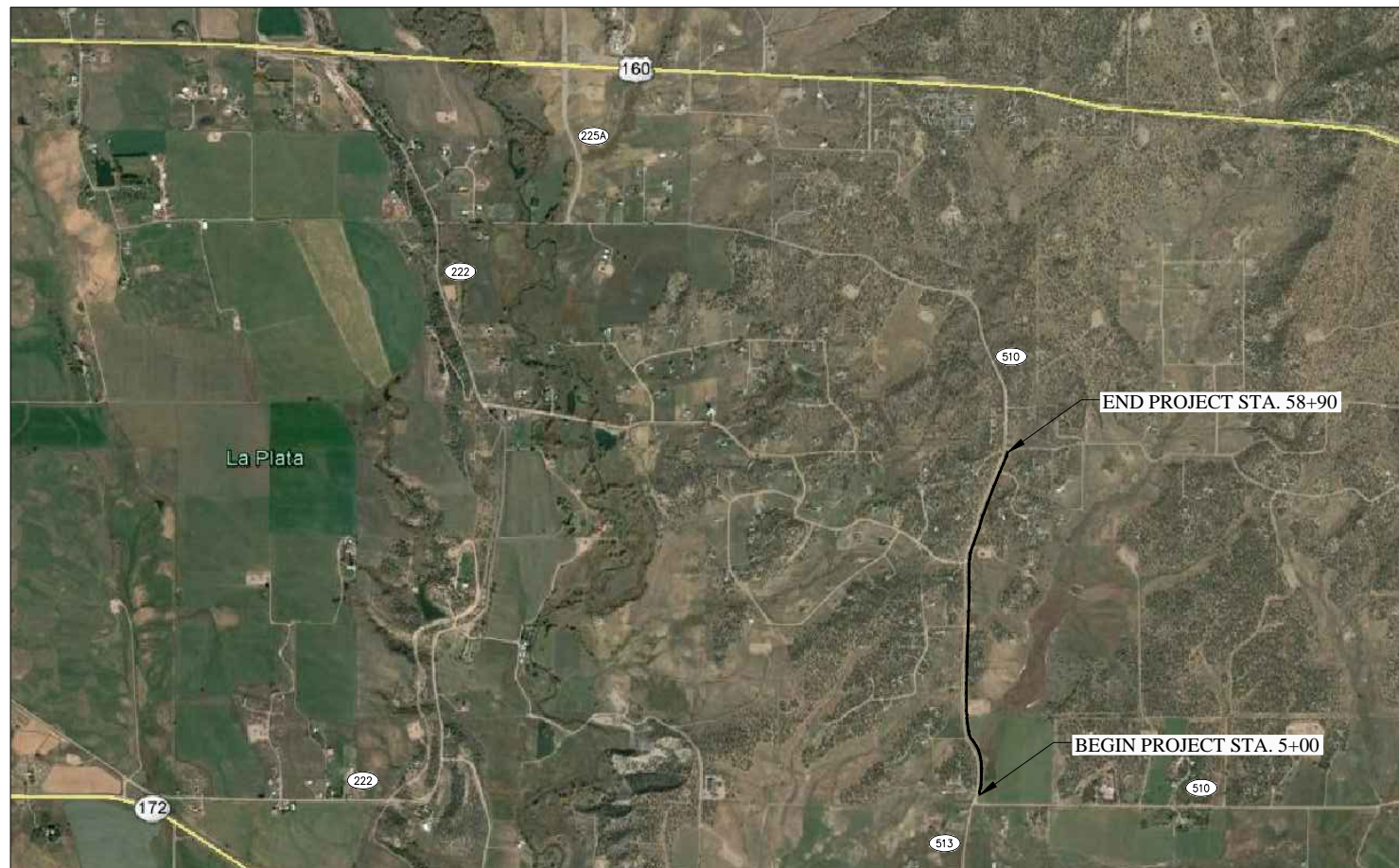
LOCATION MAP
N.T.S.

LA PLATA ARCHULETA WATER DISTRICT WATER LINES PHASE 1E WATER PIPELINE

La Plata County, Colorado
** Phase 1E-1 Ends at STA 58+90*

SHEET DESCRIPTION

1.....	PLAN AND PROFILE STA.	5+00 TO STA.	15+00
2.....	PLAN AND PROFILE STA.	15+00 TO STA.	25+00
3.....	PLAN AND PROFILE STA.	25+00 TO STA.	35+00
4.....	PLAN AND PROFILE STA.	35+00 TO STA.	45+00
5.....	PLAN AND PROFILE STA.	45+00 TO STA.	55+00
6.....	PLAN AND PROFILE STA.	55+00 TO STA.	58+90
7.....	SHEET LOCATIONS		



VICINITY MAP
N.T.S.

LEGEND

— x — x —	FENCE
— o — o —	GUARD RAIL
— OHE — OHE —	OVERHEAD POWERLINE
— GAS — GAS —	GAS LINE
— TEL — TEL —	UNDERGROUND TELEPHONE
— EWL — EWL —	EXISTING WATERLINE
— UGE — UGE —	UNDERGROUND ELECTRIC
— W14 — W14 —	PROPOSED WATERLINE WITH SIZE SHOWN BY LINETYPE
[Dotted Box]	WETLANDS
[FO]	FIBER OPTIC MARKER
[Box]	TELEPHONE PEDESTAL
[Symbol]	POWER POLE
[Symbol]	TRAUTNER BORING HOLE WITH BORE NUMBER CALL OUT
[Symbol]	WATER VALVE
[Symbol]	FIRE HYDRANT



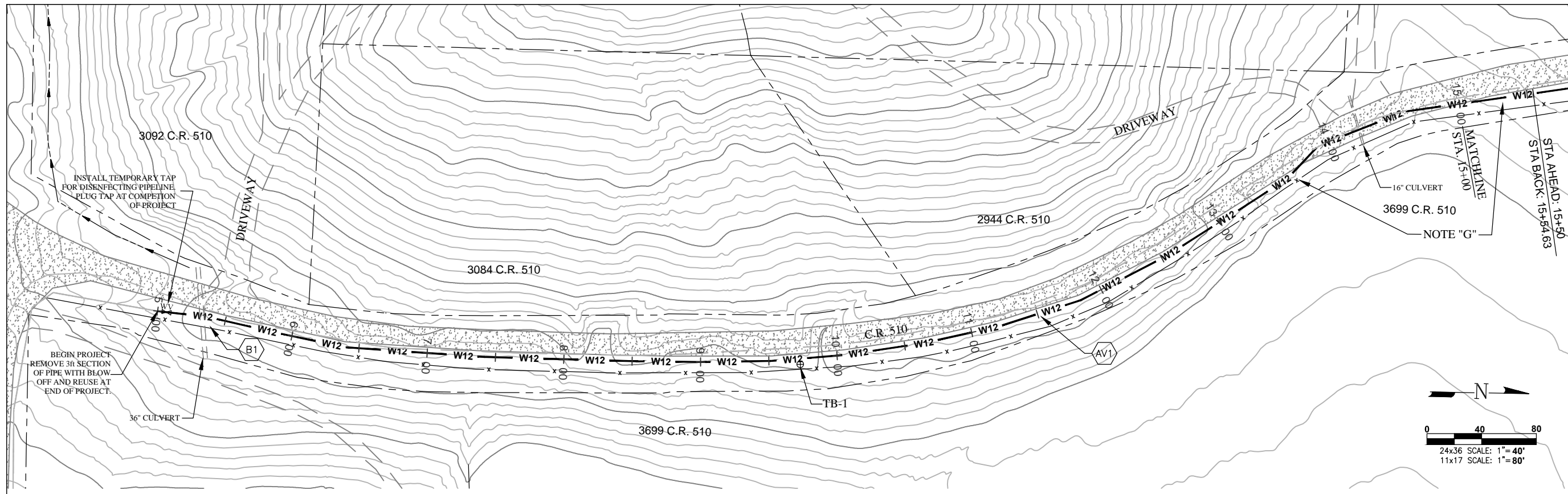
LA PLATA ARCHULETA WATER DISTRICT
PHASE 1E-1 WATER PIPELINE
COVER SHEET

CALL UTILITY NOTIFICATION
CENTER OF COLORADO
1-800-922-1987 OR (811)
CALL 3 BUSINESS DAYS PRIOR
TO ANY CONSTRUCTION.

**HARRIS WATER
ENGINEERING INC.**
954 East Second Ave.
Durango, Co. 81303
970-259-1028

DATE: 2/15/2016
DRAWN BY: MG
CHECKED BY: BS

SHEET
00 OF 7

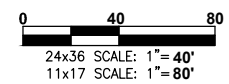
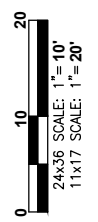
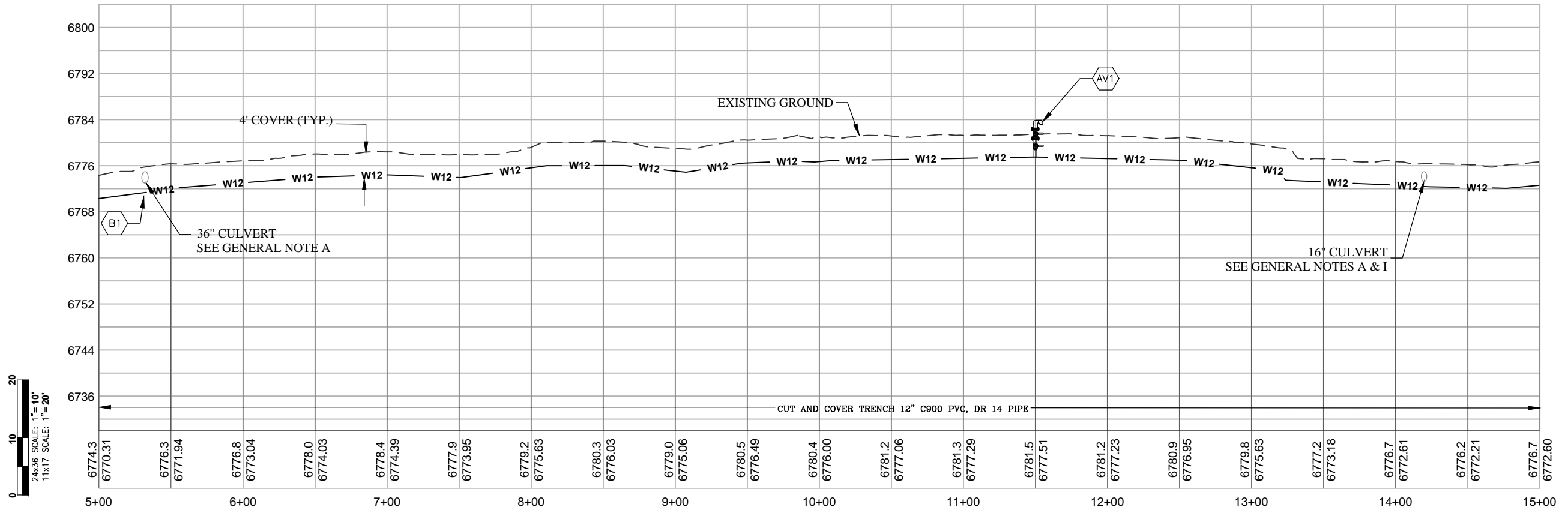
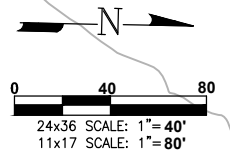


KEY NOTES
 "CONTRACTOR TO VERIFY TAP SIZE AND LOCATION PRIOR TO INSTALL AT ALL PLACEMENTS SHOWN. SERVICE TAP LOCATIONS, QUANTITIES AND SIZES ARE SUBJECT TO CHANGE."

- AV1 INSTALL AIR VAC AT HIGH POINT PER STANDARD DETAILS SHEET 11.
- B1 BORE UNDER 36" CULVERT AND SLEEVE WITH STEEL CASING. MAINTAIN 4' MINIMUM COVER OVER PIPELINE.

GENERAL NOTES

- A ELEVATIONS SHOWN ARE APPROXIMATE AND MAY NOT BE ACCURATE AT TIME OF CONSTRUCTION. FIELD VERIFY.
- B STATIONING WILL BE SUBJECT TO ACTUAL FIELD CONDITIONS AND MAY VARY FROM THAT SHOWN.
- C CONTACT LPEA PRIOR TO WORK IF EXCAVATING WITHIN 5 FEET OF POWER POLES. MAINTAIN 5 FOOT SEPARATION BETWEEN POWER POLE AND WATERLINE.
- D ALL FITTINGS ARE STANDARD UNLESS NOTED OTHERWISE. HORIZONTAL BENDS NOT SHOWN ARE TO BE PROVIDED AT NO EXTRA COST.
- E PVI CHANGES MAY NOT REQUIRE FITTINGS, CHECK USABLE PIPE BEND RADIUS. USABLE PIPE BEND RADIUS NOT TO EXCEED 75% OF MANUFACTURERS RECOMMENDED ALLOWABLE.
- F ALL LEGS OF WATER LINES AT VALVES SHALL HAVE MECHANICAL JOINT RESTRAINT (MJR) IN THE FORM OF MEGALUG 2000 SERIES PV MJR.
- G CUTS WITHIN 4ft. OF EDGE OF ROAD TO BE FLOW FILLED TO WITHIN 6" OF TOP THEN 6" OF CLASS 6 AT 95% COMPACTION OR BACKFILLED WITH CLASS 6 ENTIRE DEPTH IN 12" LIFTS AT 95% COMPACTION VERIFIED BY TESTING.
- H CUTS IN ROAD SURFACE SHALL BE FLOW FILLED TO WITHIN 8" OF TOP SURFACE. THEN MATCH LPC STANDARDS OF COMPACTED ROAD BASE WITH MAG CHLORIDE FOR TOP 8".
- I MAINTAIN A MINIMUM 4' OF COVER OVER WATER LINES AT CULVERT CROSSINGS.



ELEVATIONS DERIVED FROM COUNTY GIS MAPS AND ARE FOR INFORMATIONAL PURPOSES ONLY. FIELD CONDITIONS MAY VARY.

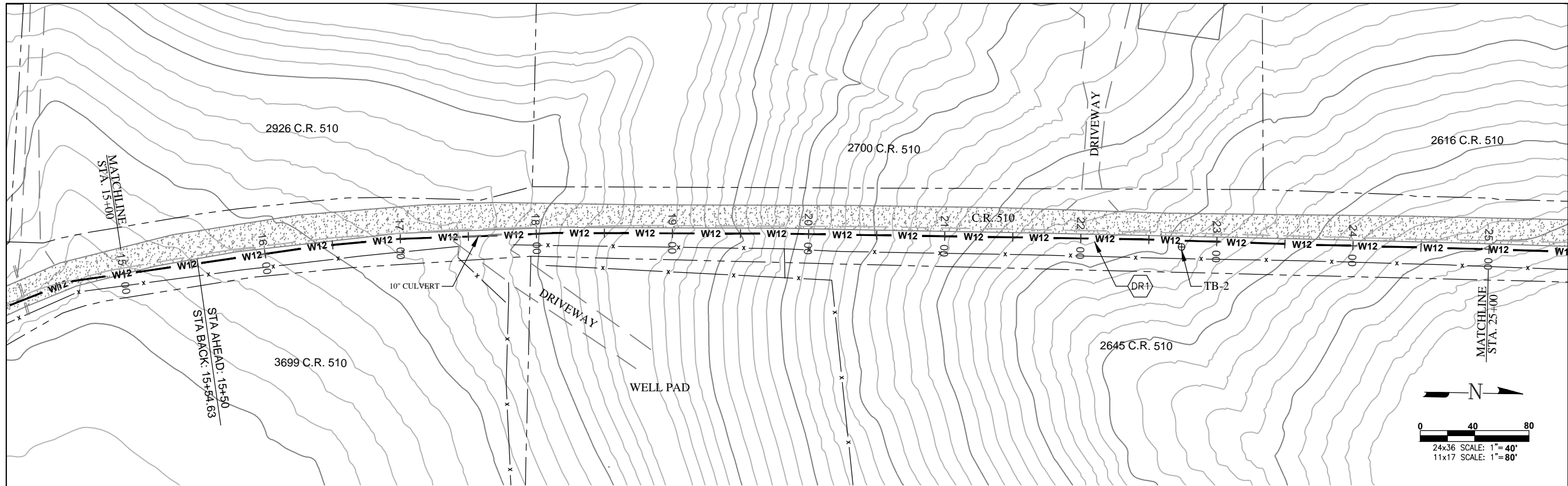


**LA PLATA ARCHULETA WATER DISTRICT
 PHASE 1E-1 WATER PIPELINE
 PLAN AND PROFILE**

CALL UTILITY NOTIFICATION
 CENTER OF COLORADO
 1-800-922-1987 OR (811)
 CALL 3 BUSINESS DAYS PRIOR
 TO ANY CONSTRUCTION.

**HARRIS WATER
 ENGINEERING INC.**
 954 East Second Ave.
 Durango, Co. 81303
 970-259-1028

DATE: 2/15/2016
 DRAWN BY: MG
 CHECKED BY: BS
 SHEET
 01 OF 7



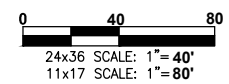
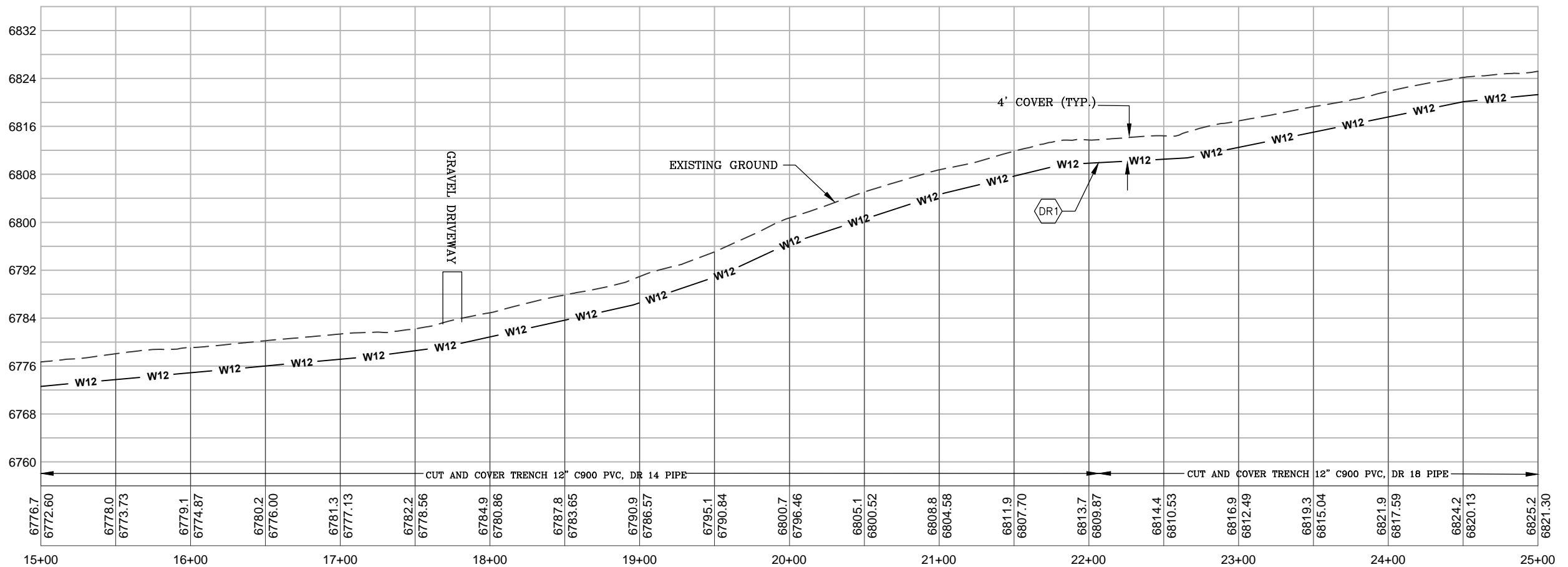
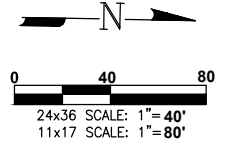
KEY NOTES

"CONTRACTOR TO VERIFY TAP SIZE AND LOCATION PRIOR TO INSTALL AT ALL PLACEMENTS SHOWN. SERVICE TAP LOCATIONS, QUANTITIES AND SIZES ARE SUBJECT TO CHANGE."

(DR1) PIPE TRANSITION, ALL PIPE AT ELEVATIONS BELOW 6810.0' SHALL BE CLASS 225 (DR-14 FOR C-900 PVC).

GENERAL NOTES

- A ELEVATIONS SHOWN ARE APPROXIMATE AND MAY NOT BE ACCURATE AT TIME OF CONSTRUCTION. FIELD VERIFY.
- B STATIONING WILL BE SUBJECT TO ACTUAL FIELD CONDITIONS AND MAY VARY FROM THAT SHOWN.
- C CONTACT LPEA PRIOR TO WORK IF EXCAVATING WITHIN 5 FEET OF POWER POLES. MAINTAIN 5 FOOT SEPARATION BETWEEN POWER POLE AND WATERLINE.
- D ALL FITTINGS ARE STANDARD UNLESS NOTED OTHERWISE. HORIZONTAL BENDS NOT SHOWN ARE TO BE PROVIDED AT NO EXTRA COST.
- E PVI CHANGES MAY NOT REQUIRE FITTINGS. CHECK USABLE PIPE BEND RADIUS. USABLE PIPE BEND RADIUS NOT TO EXCEED 75% OF MANUFACTURERS RECOMMENDED ALLOWABLE.
- F ALL LEGS OF WATER LINES AT VALVES SHALL HAVE MECHANICAL JOINT RESTRAINT (MJR) IN THE FORM OF MEGALUG 2000 SERIES PV MJR.
- G CUTS WITHIN 4ft. OF EDGE OF ROAD TO BE FLOW FILLED TO WITHIN 6" OF TOP THEN 6" OF CLASS 6 AT 95% COMPACTION OR BACKFILLED WITH CLASS 6 ENTIRE DEPTH IN 12" LIFTS AT 95% COMPACTION VERIFIED BY TESTING.
- H CUTS IN ROAD SURFACE SHALL BE FLOW FILLED TO WITHIN 8" OF TOP SURFACE. THEN MATCH LPC STANDARDS OF COMPACTED ROAD BASE WITH MAG CHLORIDE FOR TOP 8".
- I MAINTAIN A MINIMUM 4' OF COVER OVER WATER LINES AT CULVERT CROSSINGS.



ELEVATIONS DERIVED FROM COUNTY GIS MAPS AND ARE FOR INFORMATIONAL PURPOSES ONLY. FIELD CONDITIONS MAY VARY.

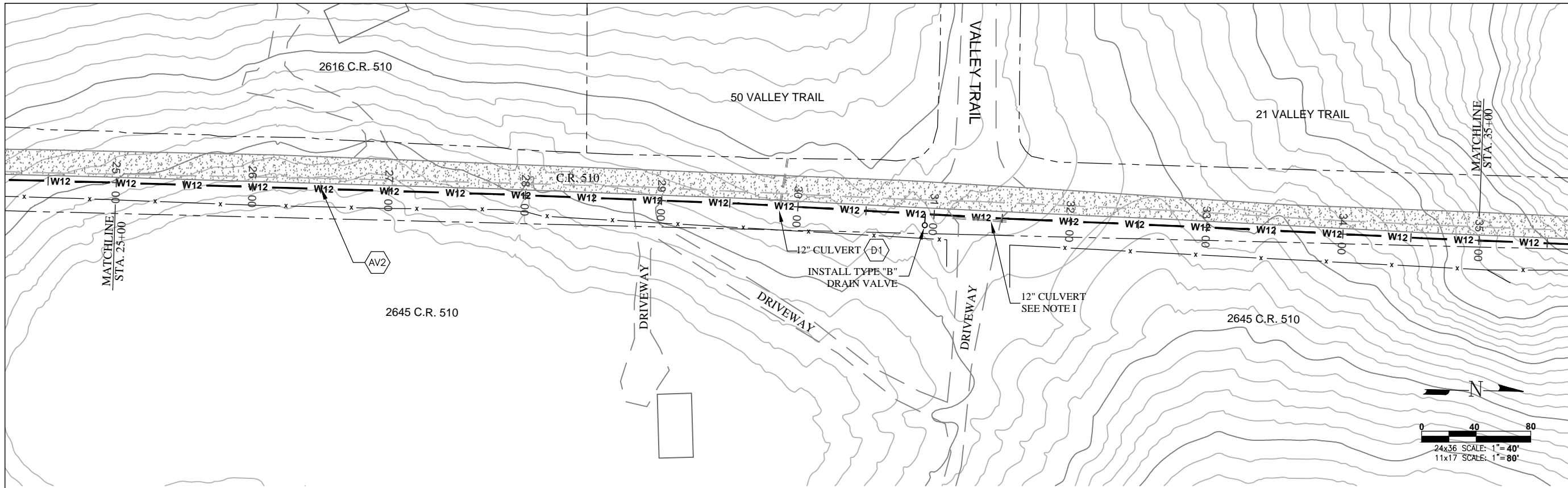


LA PLATA ARCHULETA WATER DISTRICT
PHASE 1E-1 WATER PIPELINE
PLAN AND PROFILE

CALL UTILITY NOTIFICATION
CENTER OF COLORADO
1-800-922-1987 OR (811)
CALL 3 BUSINESS DAYS PRIOR
TO ANY CONSTRUCTION.

HARRIS WATER ENGINEERING INC.
954 East Second Ave.
Durango, Co. 81303
970-259-1028

DATE: 2/15/2016
DRAWN BY: MG
CHECKED BY: BS
SHEET
02 OF 7



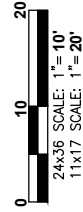
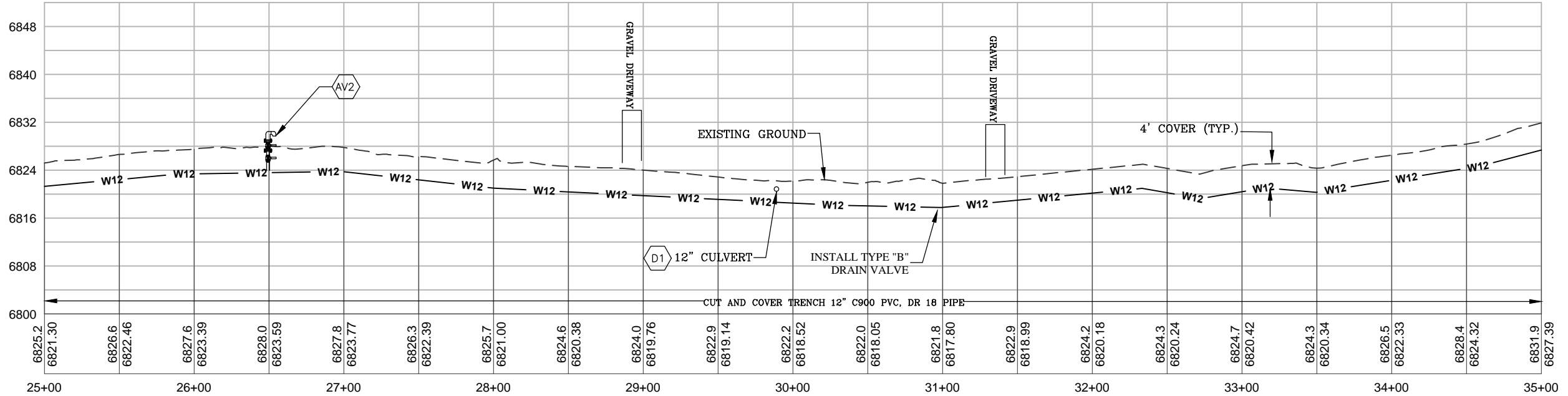
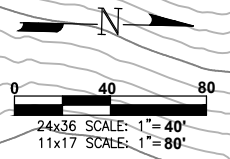
KEY NOTES

"CONTRACTOR TO VERIFY TAP SIZE AND LOCATION PRIOR TO INSTALL AT ALL PLACEMENTS SHOWN. SERVICE TAP LOCATIONS, QUANTITIES AND SIZES ARE SUBJECT TO CHANGE."

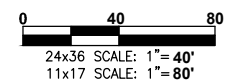
- AV2 INSTALL AIR VAC AT HIGH POINT PER STANDARD DETAILS SHEET 11.
- D1 EXTEND CULVERT SECTIONS OVER PIPELINE WHERE REQUIRED. MAINTAIN 4" MINIMUM COVER OVER PIPELINE.

GENERAL NOTES

- A ELEVATIONS SHOWN ARE APPROXIMATE AND MAY NOT BE ACCURATE AT TIME OF CONSTRUCTION. FIELD VERIFY.
- B STATIONING WILL BE SUBJECT TO ACTUAL FIELD CONDITIONS AND MAY VARY FROM THAT SHOWN.
- C CONTACT LPEA PRIOR TO WORK IF EXCAVATING WITHIN 5 FEET OF POWER POLES. MAINTAIN 5 FOOT SEPARATION BETWEEN POWER POLE AND WATERLINE.
- D ALL FITTINGS ARE STANDARD UNLESS NOTED OTHERWISE. HORIZONTAL BENDS NOT SHOWN ARE TO BE PROVIDED AT NO EXTRA COST.
- E PVI CHANGES MAY NOT REQUIRE FITTINGS, CHECK USABLE PIPE BEND RADIUS. USABLE PIPE BEND RADIUS NOT TO EXCEED 75% OF MANUFACTURERS RECOMMENDED ALLOWABLE.
- F ALL LEGS OF WATER LINES AT VALVES SHALL HAVE MECHANICAL JOINT RESTRAINT (MJR) IN THE FORM OF MEGALUG 2000 SERIES PV MJR.
- G CUTS WITHIN 4ft. OF EDGE OF ROAD TO BE FLOW FILLED TO WITHIN 6" OF TOP THEN 6" OF CLASS 6 AT 95% COMPACTION OR BACKFILLED WITH CLASS 6 ENTIRE DEPTH IN 12" LIFTS AT 95% COMPACTION VERIFIED BY TESTING.
- H CUTS IN ROAD SURFACE SHALL BE FLOW FILLED TO WITHIN 8" OF TOP SURFACE. THEN MATCH LPC STANDARDS OF COMPACTED ROAD BASE WITH MAG CHLORIDE FOR TOP 8".
- I MAINTAIN A MINIMUM 4' OF COVER OVER WATER LINES AT CULVERT CROSSINGS.



24x36 SCALE: 1"=40'
11x17 SCALE: 1"=80'



ELEVATIONS DERIVED FROM COUNTY GIS MAPS AND ARE FOR INFORMATIONAL PURPOSES ONLY. FIELD CONDITIONS MAY VARY.

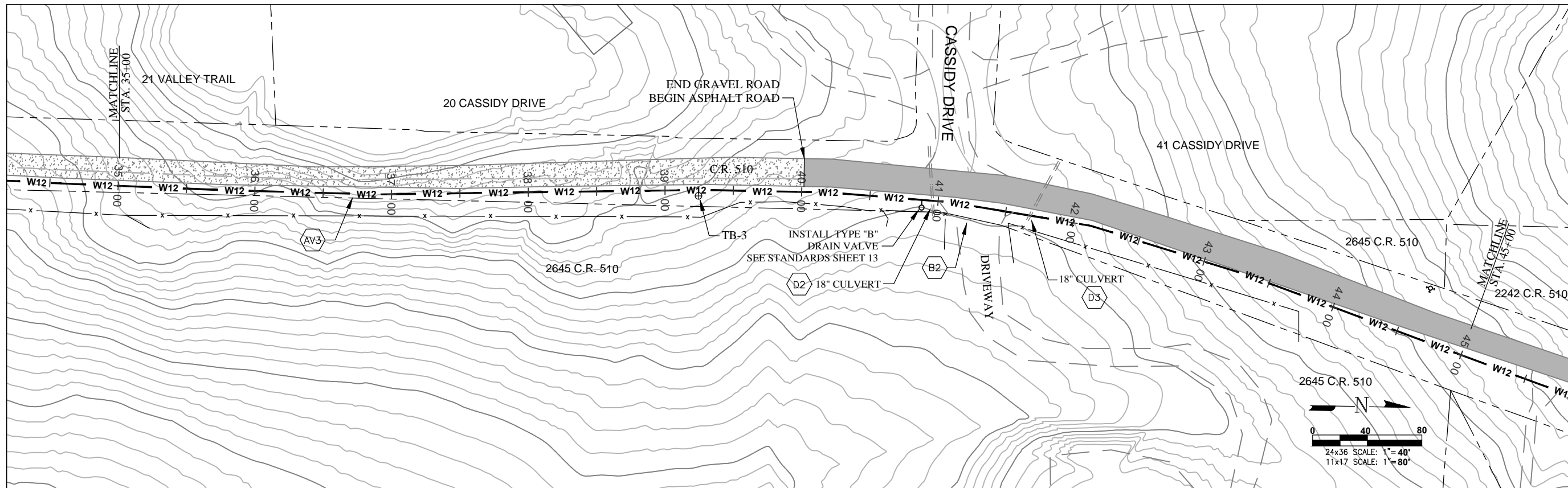


**LA PLATA ARCHULETA WATER DISTRICT
PHASE 1E-1 WATER PIPELINE
PLAN AND PROFILE**

CALL UTILITY NOTIFICATION
CENTER OF COLORADO
1-800-922-1987 OR (811)
CALL 3 BUSINESS DAYS PRIOR
TO ANY CONSTRUCTION.

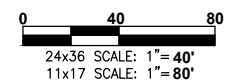
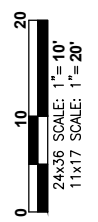
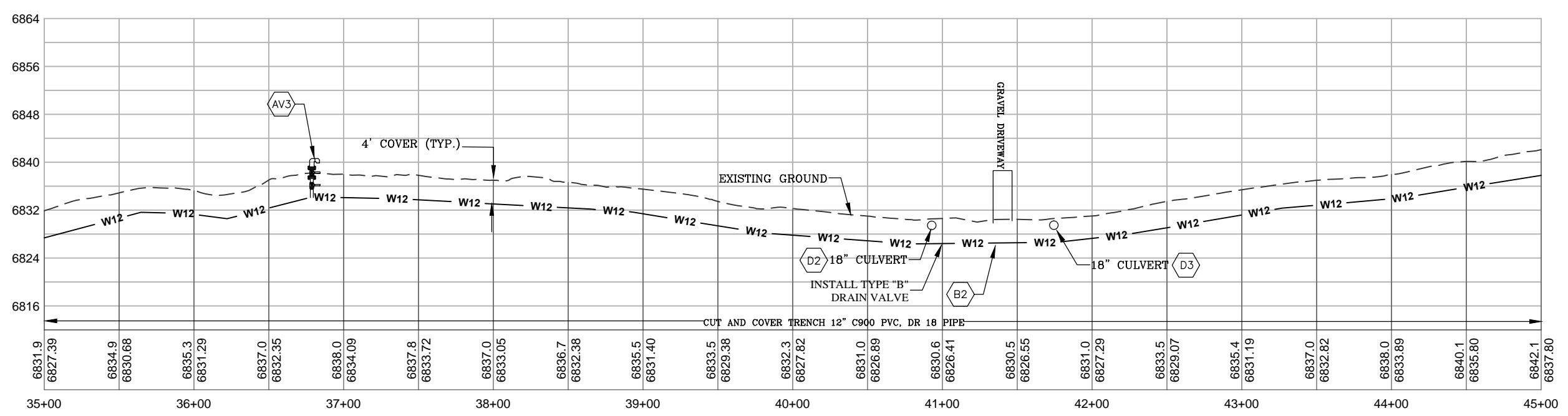
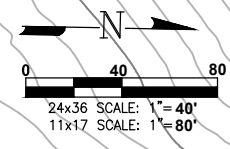
**HARRIS WATER
ENGINEERING INC.**
954 East Second Ave.
Durango, Co. 81303
970-259-1028

DATE: 2/15/2016
DRAWN BY: MG
CHECKED BY: BS
SHEET
03 OF 7



- KEY NOTES**
- "CONTRACTOR TO VERIFY TAP SIZE AND LOCATION PRIOR TO INSTALL AT ALL PLACEMENTS SHOWN. SERVICE TAP LOCATIONS, QUANTITIES AND SIZES ARE SUBJECT TO CHANGE."
- AV3 INSTALL AIR VAC AT HIGH POINT PER STANDARD DETAILS SHEET 11.
 - D2 EXTEND CULVERT SECTIONS OVER PIPELINE WHERE REQUIRED. MAINTAIN 4' MINIMUM COVER OVER PIPELINE.
 - D3 BORE UNDER DRIVEWAY AND CULVERTS. MAINTAIN 4' MINIMUM COVER OVER PIPELINE.

- GENERAL NOTES**
- A ELEVATIONS SHOWN ARE APPROXIMATE AND MAY NOT BE ACCURATE AT TIME OF CONSTRUCTION. FIELD VERIFY.
 - B STATIONING WILL BE SUBJECT TO ACTUAL FIELD CONDITIONS AND MAY VARY FROM THAT SHOWN.
 - C CONTACT LPEA PRIOR TO WORK IF EXCAVATING WITHIN 5 FEET OF POWER POLES. MAINTAIN 5 FOOT SEPARATION BETWEEN POWER POLE AND WATERLINE.
 - D ALL FITTINGS ARE STANDARD UNLESS NOTED OTHERWISE. HORIZONTAL BENDS NOT SHOWN ARE TO BE PROVIDED AT NO EXTRA COST.
 - E PVI CHANGES MAY NOT REQUIRE FITTINGS, CHECK USABLE PIPE BEND RADIUS. USABLE PIPE BEND RADIUS NOT TO EXCEED 75% OF MANUFACTURERS RECOMMENDED ALLOWABLE.
 - F ALL LEGS OF WATER LINES AT VALVES SHALL HAVE MECHANICAL JOINT RESTRAINT (MJR) IN THE FORM OF MEGALUG 2000 SERIES PV MJR.
 - G CUTS WITHIN 4ft. OF EDGE OF ROAD TO BE FLOW FILLED TO WITHIN 6" OF TOP THEN 6" OF CLASS 6 AT 95% COMPACTION OR BACKFILLED WITH CLASS 6 ENTIRE DEPTH IN 12" LIFTS AT 95% COMPACTION VERIFIED BY TESTING.
 - H CUTS IN ROAD SURFACE SHALL BE FLOW FILLED TO WITHIN 8" OF TOP SURFACE. THEN MATCH LPC STANDARDS OF COMPACTED ROAD BASE WITH MAG CHLORIDE FOR TOP 8".
 - I MAINTAIN A MINIMUM 4' OF COVER OVER WATER LINES AT CULVERT CROSSINGS.



ELEVATIONS DERIVED FROM COUNTY GIS MAPS AND ARE FOR INFORMATIONAL PURPOSES ONLY. FIELD CONDITIONS MAY VARY.

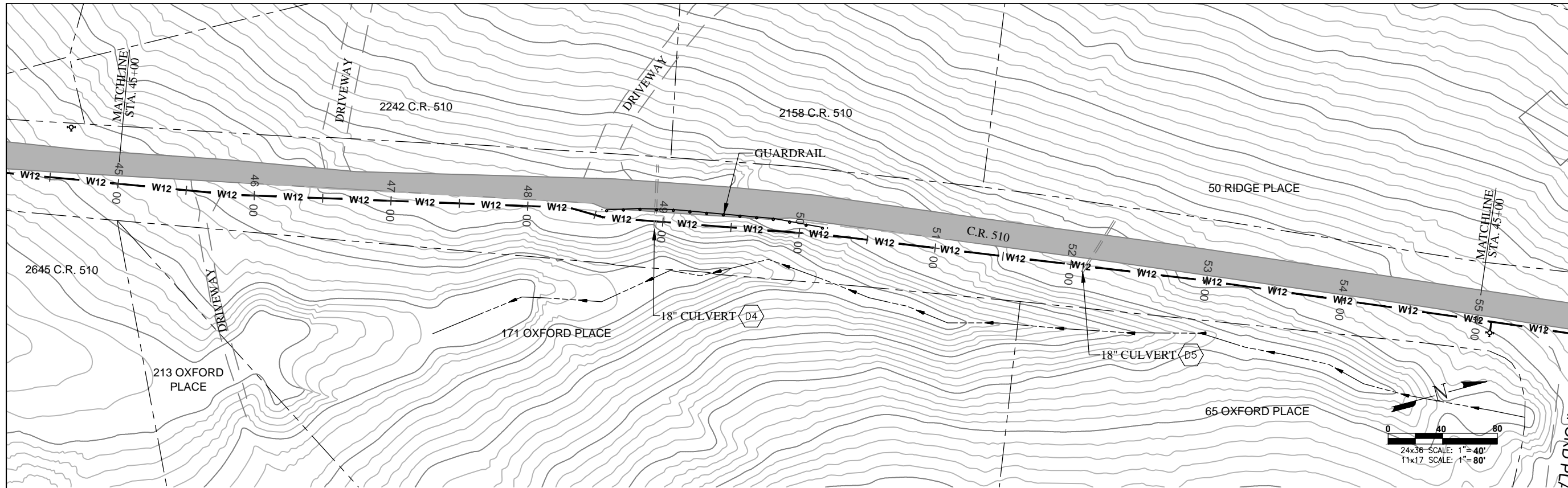


LA PLATA ARCHULETA WATER DISTRICT
PHASE 1E-1 WATER PIPELINE
PLAN AND PROFILE

CALL UTILITY NOTIFICATION
 CENTER OF COLORADO
 1-800-922-1987 OR (811)
 CALL 3 BUSINESS DAYS PRIOR
 TO ANY CONSTRUCTION.

HARRIS WATER ENGINEERING INC.
 954 East Second Ave.
 Durango, Co. 81303
 970-259-1028

DATE: 2/15/2016
 DRAWN BY: MG
 CHECKED BY: BS
 SHEET
 04 OF 7

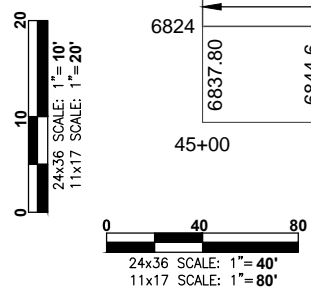
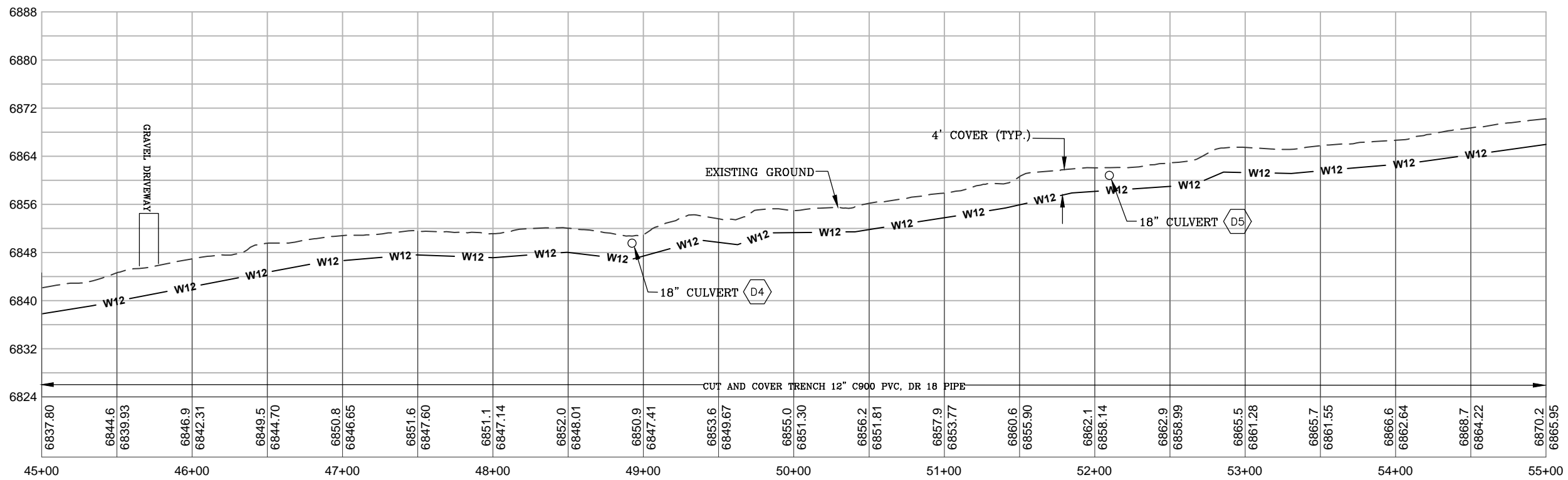


KEY NOTES
 "CONTRACTOR TO VERIFY TAP SIZE AND LOCATION PRIOR TO INSTALL AT ALL PLACEMENTS SHOWN. SERVICE TAP LOCATIONS, QUANTITIES AND SIZES ARE SUBJECT TO CHANGE."

D4 EXTEND CULVERT SECTIONS OVER PIPELINE WHERE REQUIRED. MAINTAIN 4' MINIMUM COVER OVER PIPELINE.
 D5

GENERAL NOTES

- A ELEVATIONS SHOWN ARE APPROXIMATE AND MAY NOT BE ACCURATE AT TIME OF CONSTRUCTION. FIELD VERIFY.
- B STATIONING WILL BE SUBJECT TO ACTUAL FIELD CONDITIONS AND MAY VARY FROM THAT SHOWN.
- C CONTACT LPEA PRIOR TO WORK IF EXCAVATING WITHIN 5 FEET OF POWER POLES. MAINTAIN 5 FOOT SEPARATION BETWEEN POWER POLE AND WATERLINE.
- D ALL FITTINGS ARE STANDARD UNLESS NOTED OTHERWISE. HORIZONTAL BENDS NOT SHOWN ARE TO BE PROVIDED AT NO EXTRA COST.
- E PVI CHANGES MAY NOT REQUIRE FITTINGS. CHECK USABLE PIPE BEND RADIUS. USABLE PIPE BEND RADIUS NOT TO EXCEED 75% OF MANUFACTURERS RECOMMENDED ALLOWABLE.
- F ALL LEGS OF WATER LINES AT VALVES SHALL HAVE MECHANICAL JOINT RESTRAINT (MJR) IN THE FORM OF MEGALUG 2000 SERIES PV MJR.
- G CUTS WITHIN 4ft. OF EDGE OF ROAD TO BE FLOW FILLED TO WITHIN 6" OF TOP THEN 6" OF CLASS 6 AT 95% COMPACTION OR BACKFILLED WITH CLASS 6 ENTIRE DEPTH IN 12" LIFTS AT 95% COMPACTION VERIFIED BY TESTING.
- H CUTS IN ROAD SURFACE SHALL BE FLOW FILLED TO WITHIN 8" OF TOP SURFACE. THEN MATCH LPC STANDARDS OF COMPACTED ROAD BASE WITH MAG CHLORIDE FOR TOP 8".
- I MAINTAIN A MINIMUM 4' OF COVER OVER WATER LINES AT CULVERT CROSSINGS.



ELEVATIONS DERIVED FROM COUNTY GIS MAPS AND ARE FOR INFORMATIONAL PURPOSES ONLY. FIELD CONDITIONS MAY VARY.

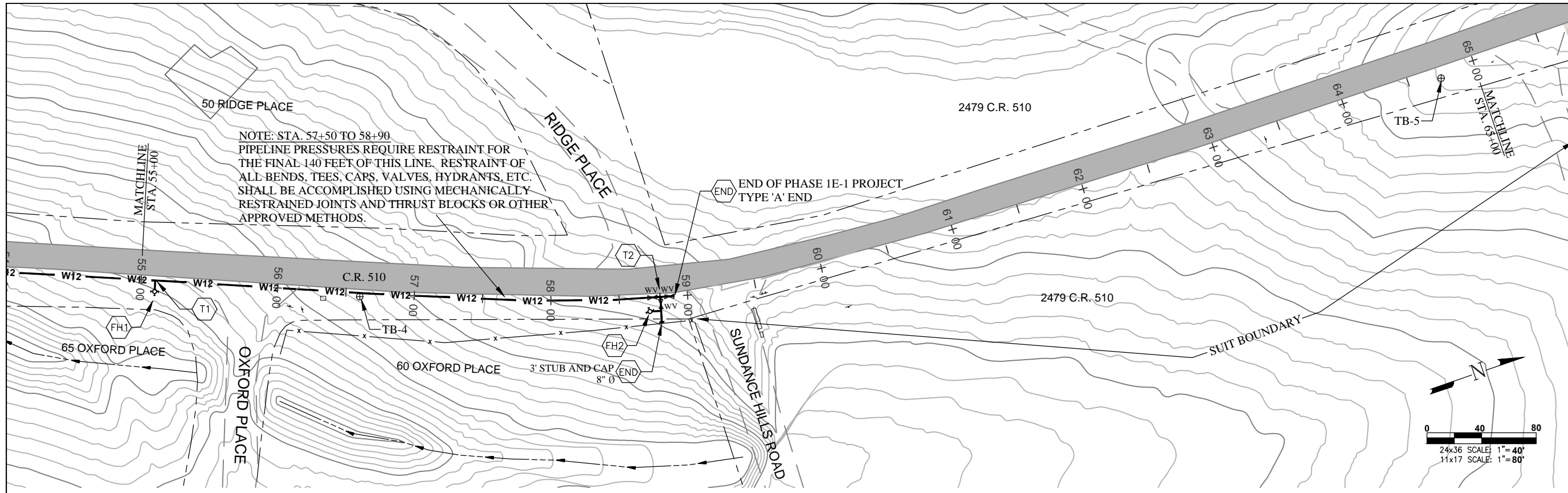


LA PLATA ARCHULETA WATER DISTRICT
PHASE 1E-1 WATER PIPELINE
PLAN AND PROFILE

CALL UTILITY NOTIFICATION
 CENTER OF COLORADO
 1-800-922-1987 OR (811)
 CALL 3 BUSINESS DAYS PRIOR
 TO ANY CONSTRUCTION.

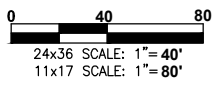
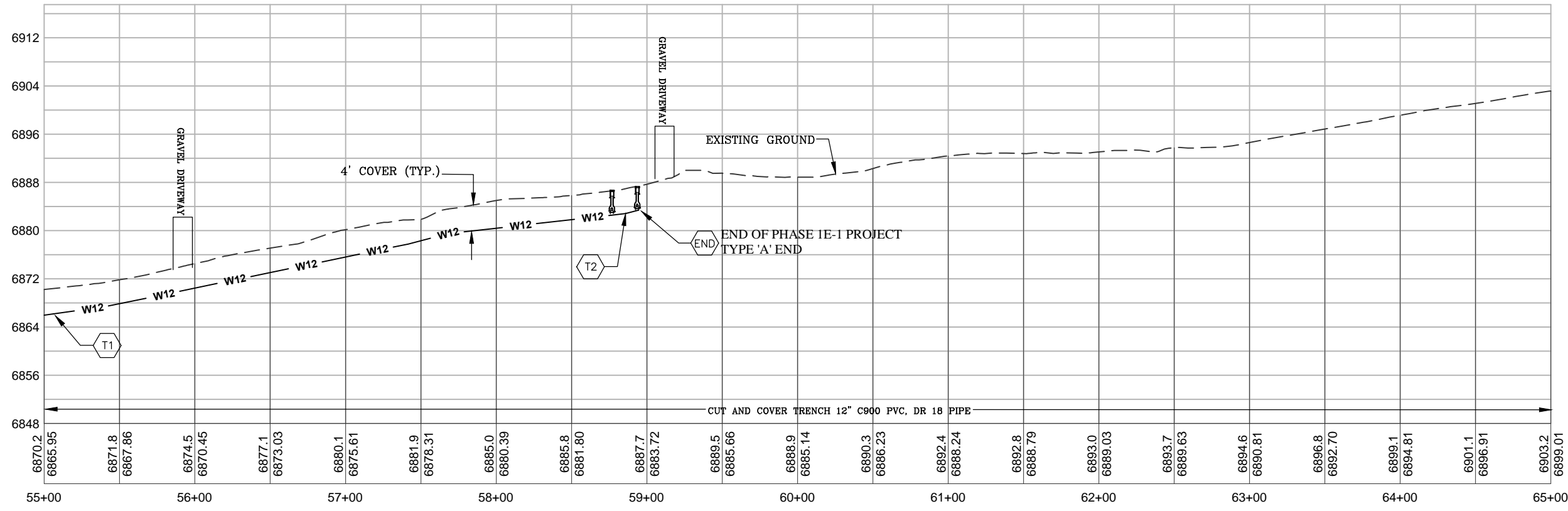
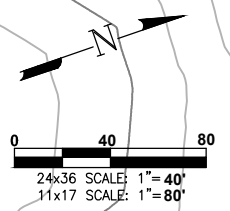
HARRIS WATER ENGINEERING INC.
 954 East Second Ave.
 Durango, Co. 81303
 970-259-1028

DATE: 2/15/2016
 DRAWN BY: MG
 CHECKED BY: BS
 SHEET
 05 OF 7



- KEY NOTES**
- "CONTRACTOR TO VERIFY TAP SIZE AND LOCATION PRIOR TO INSTALL AT ALL PLACEMENTS SHOWN. SERVICE TAP LOCATIONS, QUANTITIES AND SIZES ARE SUBJECT TO CHANGE."
- FH1 INSTALL FIRE HYDRANT 10 FEET FROM EDGE OF ROAD PER STANDARD DETAILS SHEET 8.
 - FH2 INSTALL FIRE HYDRANT OFF 12" MAIN LINE 10 FEET FROM EDGE OF ROAD PER STANDARD DETAILS SHEET 8.
 - T1 INSTALL 12x12x8 TEE.
 - T2 INSTALL 12x12x8 TEE WITH GATE VALVES ON ALL LEGS. PER STANDARD DETAILS SHEET 10.
 - END INSTALL 3" PIPE AND BLOW-OFF PER STANDARD DETAILS SHEET 12 TYPE 'A'. INSTALL FIBERGLASS MARKER AT END OF LINE.

- GENERAL NOTES**
- A ELEVATIONS SHOWN ARE APPROXIMATE AND MAY NOT BE ACCURATE AT TIME OF CONSTRUCTION. FIELD VERIFY.
 - B STATIONING WILL BE SUBJECT TO ACTUAL FIELD CONDITIONS AND MAY VARY FROM THAT SHOWN.
 - C CONTACT LPEA PRIOR TO WORK IF EXCAVATING WITHIN 5 FEET OF POWER POLES. MAINTAIN 5 FOOT SEPARATION BETWEEN POWER POLE AND WATERLINE.
 - D ALL FITTINGS ARE STANDARD UNLESS NOTED OTHERWISE. HORIZONTAL BENDS NOT SHOWN ARE TO BE PROVIDED AT NO EXTRA COST.
 - E PVI CHANGES MAY NOT REQUIRE FITTINGS. CHECK USABLE PIPE BEND RADIUS. USABLE PIPE BEND RADIUS NOT TO EXCEED 75% OF MANUFACTURERS RECOMMENDED ALLOWABLE.
 - F ALL LEGS OF WATER LINES AT VALVES SHALL HAVE MECHANICAL JOINT RESTRAINT (MJR) IN THE FORM OF MEGALUG 2000 SERIES PV MJR.
 - G CUTS WITHIN 4ft. OF EDGE OF ROAD TO BE FLOW FILLED TO WITHIN 6" OF TOP THEN 6" OF CLASS 6 AT 95% COMPACTION OR BACKFILLED WITH CLASS 6 ENTIRE DEPTH IN 12" LIFTS AT 95% COMPACTION VERIFIED BY TESTING.
 - H CUTS IN ROAD SURFACE SHALL BE FLOW FILLED TO WITHIN 8" OF TOP SURFACE. THEN MATCH LPC STANDARDS OF COMPACTED ROAD BASE WITH MAG CHLORIDE FOR TOP 8".
 - I MAINTAIN A MINIMUM 4' OF COVER OVER WATER LINES AT CULVERT CROSSINGS.



ELEVATIONS DERIVED FROM COUNTY GIS MAPS AND ARE FOR INFORMATIONAL PURPOSES ONLY. FIELD CONDITIONS MAY VARY.

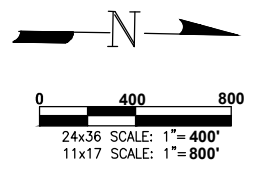


LA PLATA ARCHULETA WATER DISTRICT
PHASE 1E-1 WATER PIPELINE
PLAN AND PROFILE

CALL UTILITY NOTIFICATION
 CENTER OF COLORADO
 1-800-922-1987 OR (811)
 CALL 3 BUSINESS DAYS PRIOR
 TO ANY CONSTRUCTION.

HARRIS WATER ENGINEERING INC.
 954 East Second Ave.
 Durango, Co. 81303
 970-259-1028

DATE: 2/15/2016
 DRAWN BY: MG
 CHECKED BY: BS
SHEET
 06 OF 7



LA PLATA ARCHULETA WATER DISTRICT
PHASE 1E-1 WATER PIPELINE
SHEET LOCATIONS

CALL UTILITY NOTIFICATION
 CENTER OF COLORADO
 1-800-922-1987 OR (811)
 CALL 3 BUSINESS DAYS PRIOR
 TO ANY CONSTRUCTION.

HARRIS WATER
ENGINEERING INC.
 954 East Second Ave.
 Durango, Co. 81303
 970-259-1028

DATE: 2/15/2016
 DRAWN BY: MG
 CHECKED BY: BS

SHEET
 7 OF 7