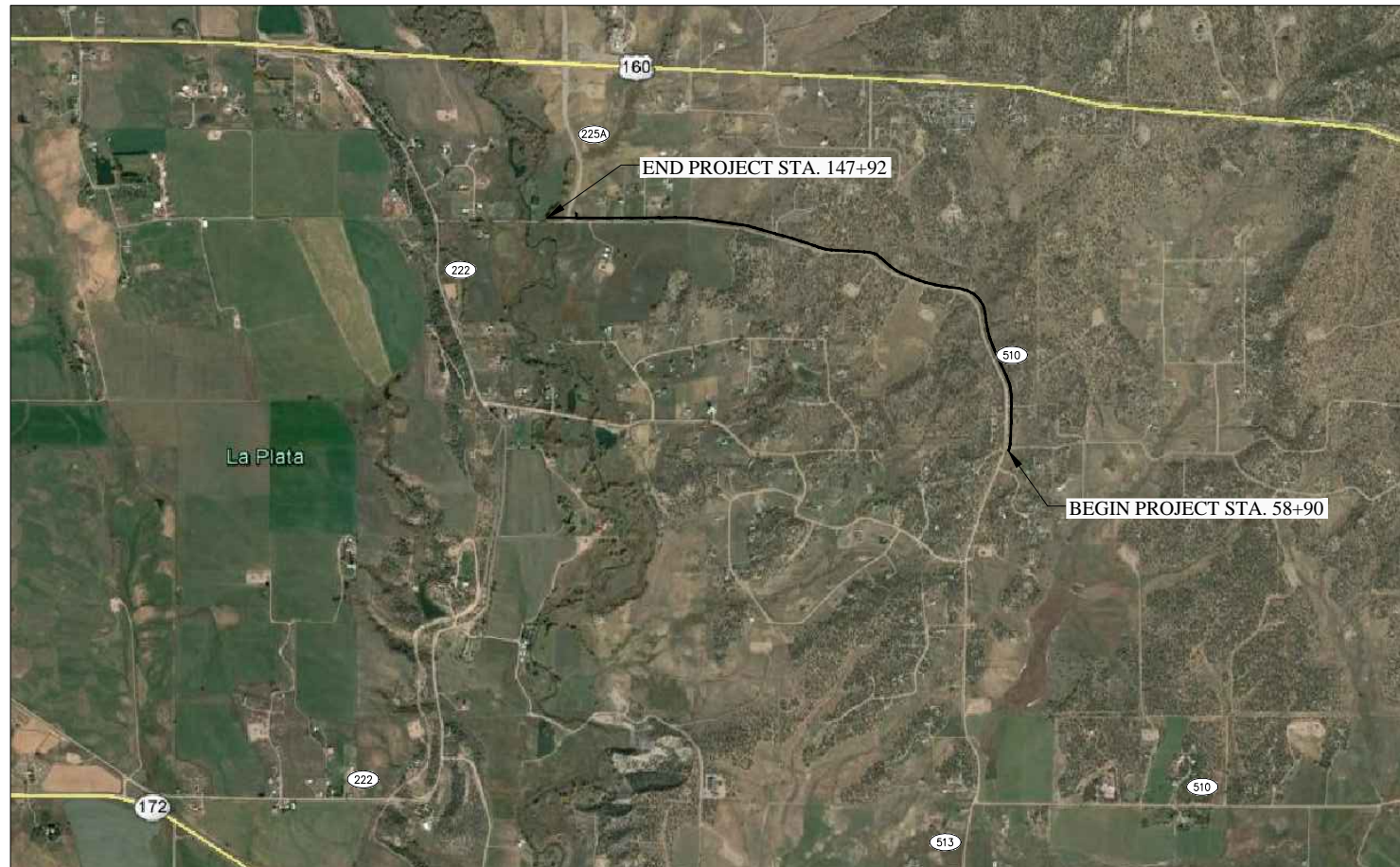


LOCATION MAP
N.T.S.

LA PLATA ARCHULETA WATER DISTRICT WATER LINES PHASE 1E-2 WATER PIPELINE La Plata County, Colorado



VICINITY MAP
N.T.S.

SHEET DESCRIPTION

- 1.....PLAN AND PROFILE STA. 58+90 TO STA. 65+00
- 2.....PLAN AND PROFILE STA. 65+00 TO STA. 75+00
- 3.....PLAN AND PROFILE STA. 75+00 TO STA. 85+00
- 4.....PLAN AND PROFILE STA. 85+00 TO STA. 95+00
- 5.....PLAN AND PROFILE STA. 95+00 TO STA. 105+00
- 6.....PLAN AND PROFILE STA. 105+00 TO STA. 115+00
- 7.....PLAN AND PROFILE STA. 115+00 TO STA. 125+00
- 8.....PLAN AND PROFILE STA. 125+00 TO STA. 135+00
- 9.....PLAN AND PROFILE STA. 135+00 TO STA. 145+00
- 10.....PLAN AND PROFILE STA. 145+00 TO STA. 147+92
- 11.....SHEET LOCATIONS

LEGEND

- x — x — FENCE
- o — o — GUARD RAIL
- OHE — OHE — OVERHEAD POWERLINE
- GAS — GAS — GAS LINE
- TEL — TEL — UNDERGROUND TELEPHONE
- EWL — EWL — EXISTING WATERLINE
- UGE — UGE — UNDERGROUND ELECTRIC
- W14 — W14 — PROPOSED WATERLINE WITH SIZE SHOWN BY LINETYPE
- WETLANDS
- FO FIBER OPTIC MARKER
- TELEPHONE PEDESTAL
- POWER POLE
- TB- TRAUTNER BORING HOLE WITH BORE NUMBER CALL OUT
- WV WATER VALVE
- FIRE HYDRANT



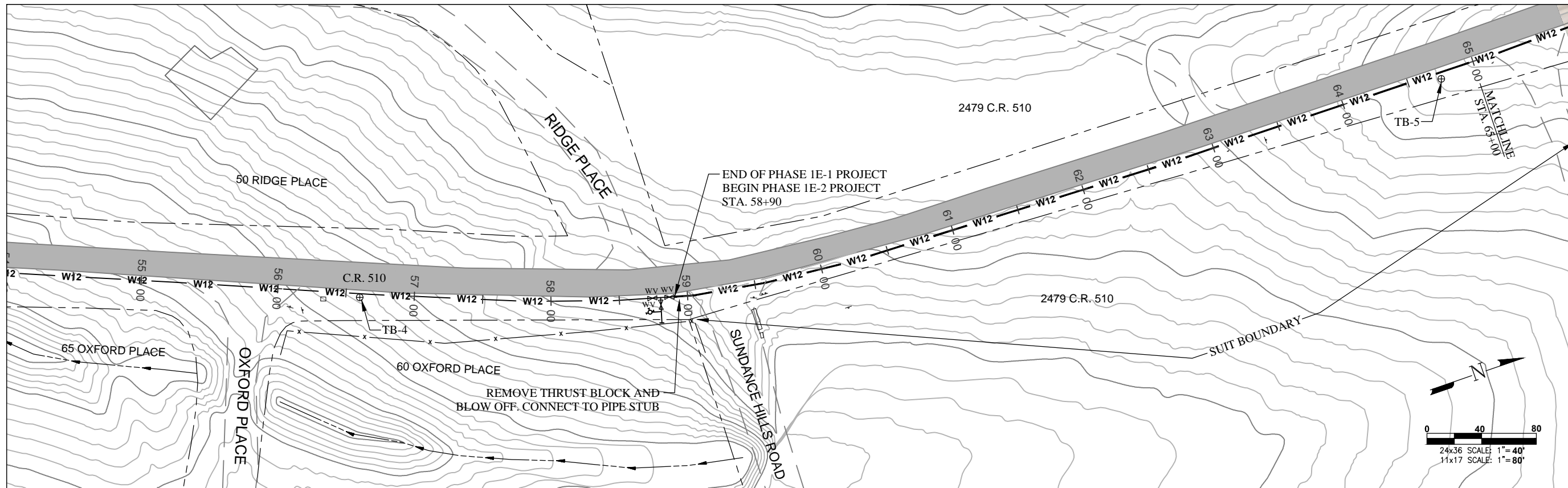
LA PLATA ARCHULETA WATER DISTRICT
PHASE 1E-2 WATER PIPELINE
COVER SHEET

CALL UTILITY NOTIFICATION
CENTER OF COLORADO
1-800-922-1987 OR (811)
CALL 3 BUSINESS DAYS PRIOR
TO ANY CONSTRUCTION.

**HARRIS WATER
ENGINEERING INC.**
954 East Second Ave.
Durango, Co. 81303
970-259-1028

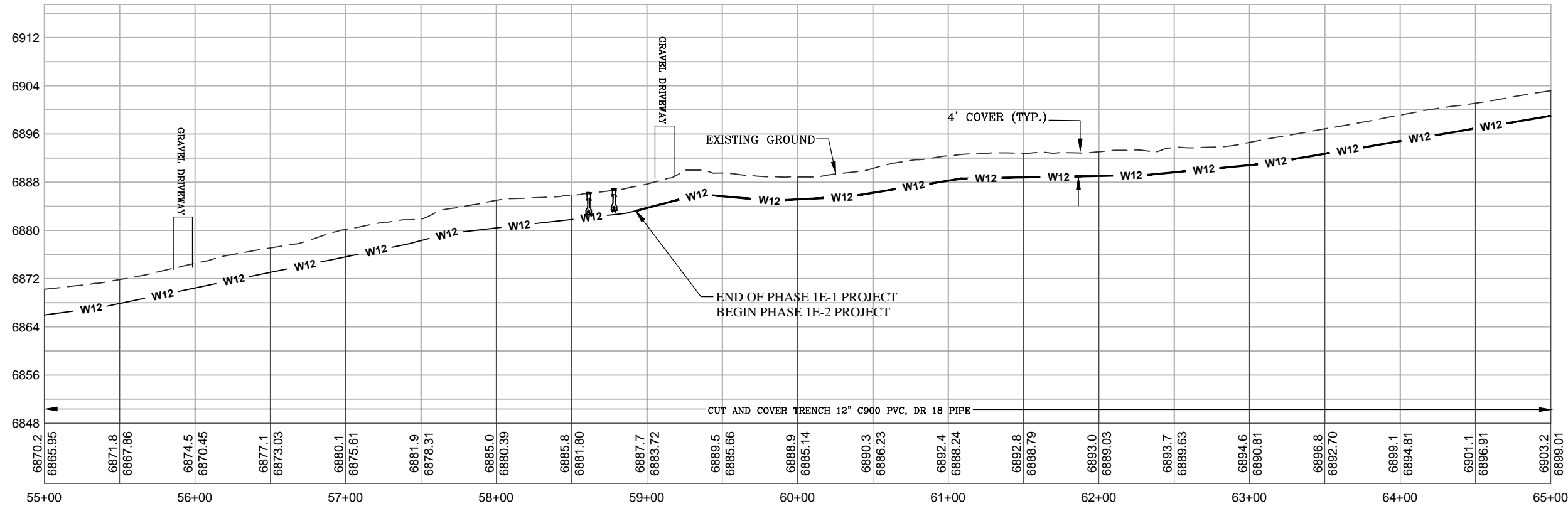
DATE: 10/16/2016
DRAWN BY: MG
CHECKED BY: BS

SHEET
00 OF 11



KEY NOTES
 "CONTRACTOR TO VERIFY TAP SIZE AND LOCATION PRIOR TO INSTALL AT ALL PLACEMENTS SHOWN. SERVICE TAP LOCATIONS, QUANTITIES AND SIZES ARE SUBJECT TO CHANGE."

- GENERAL NOTES**
- A ELEVATIONS SHOWN ARE APPROXIMATE AND MAY NOT BE ACCURATE AT TIME OF CONSTRUCTION. FIELD VERIFY.
 - B STATIONING WILL BE SUBJECT TO ACTUAL FIELD CONDITIONS AND MAY VARY FROM THAT SHOWN.
 - C CONTACT LPEA PRIOR TO WORK IF EXCAVATING WITHIN 5 FEET OF POWER POLES. MAINTAIN 5 FOOT SEPARATION BETWEEN POWER POLE AND WATERLINE.
 - D ALL FITTINGS ARE STANDARD UNLESS NOTED OTHERWISE. HORIZONTAL BENDS NOT SHOWN ARE TO BE PROVIDED AT NO EXTRA COST.
 - E PVI CHANGES MAY NOT REQUIRE FITTINGS, CHECK USABLE PIPE BEND RADIUS. USABLE PIPE BEND RADIUS NOT TO EXCEED 75% OF MANUFACTURERS RECOMMENDED ALLOWABLE.
 - F ALL LEGS OF WATER LINES AT VALVES SHALL HAVE MECHANICAL JOINT RESTRAINT (MJR) IN THE FORM OF MEGALUG 2000 SERIES PV MJR.
 - G CUTS WITHIN 4ft. OF EDGE OF ROAD TO BE FLOW FILLED TO WITHIN 6" OF TOP THEN 6" OF CLASS 6 AT 95% COMPACTION OR BACKFILLED WITH CLASS 6 ENTIRE DEPTH IN 12" LIFTS AT 95% COMPACTION VERIFIED BY TESTING.
 - H CUTS IN ROAD SURFACE SHALL BE FLOW FILLED TO WITHIN 8" OF TOP SURFACE. THEN MATCH LPC STANDARDS OF COMPACTED ROAD BASE WITH MAG CHLORIDE FOR TOP 8".
 - I MAINTAIN A MINIMUM 4' OF COVER OVER WATER LINES AT CULVERT CROSSINGS.



24x36 SCALE: 1"=40'
 11x17 SCALE: 1"=80'

0 10 20

0 40 80

24x36 SCALE: 1"=40'
 11x17 SCALE: 1"=80'

ELEVATIONS DERIVED FROM COUNTY GIS MAPS AND ARE FOR INFORMATIONAL PURPOSES ONLY. FIELD CONDITIONS MAY VARY.



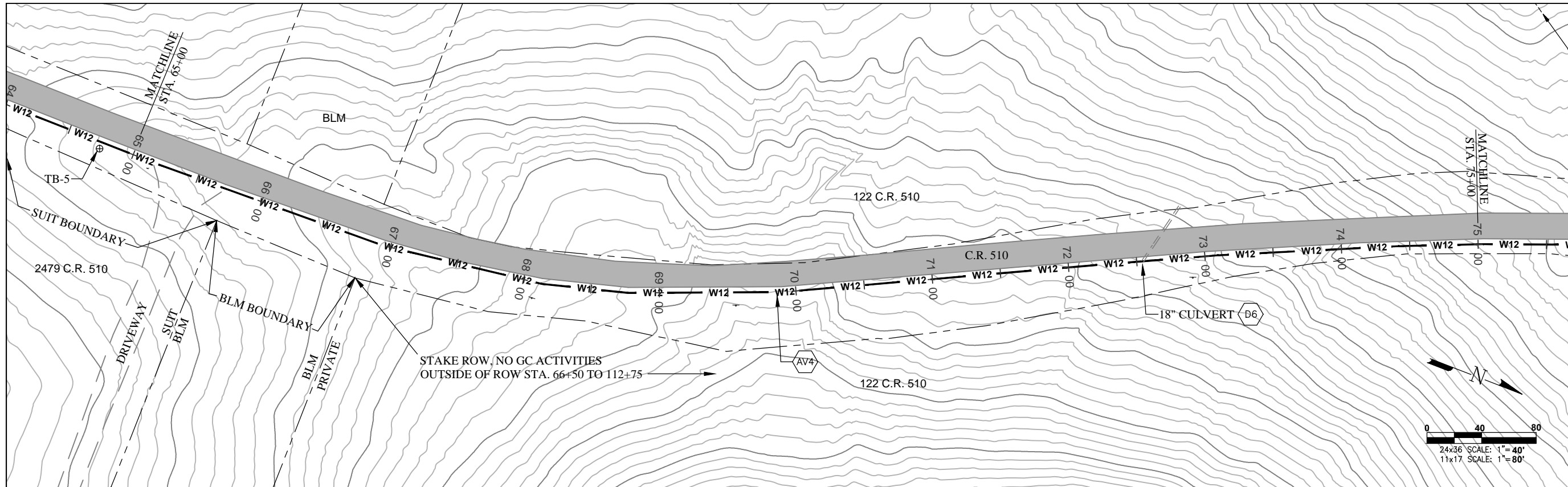
LA PLATA ARCHULETA WATER DISTRICT
PHASE 1E-2 WATER PIPELINE
PLAN AND PROFILE

CALL UTILITY NOTIFICATION
 CENTER OF COLORADO
 1-800-922-1987 OR (811)
 CALL 3 BUSINESS DAYS PRIOR
 TO ANY CONSTRUCTION.

HARRIS WATER ENGINEERING INC.
 954 East Second Ave.
 Durango, Co. 81303
 970-259-1028

DATE: 10/16/2016
 DRAWN BY: MG
 CHECKED BY: BS

SHEET
 01 OF 11

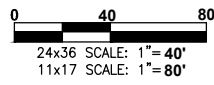
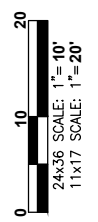
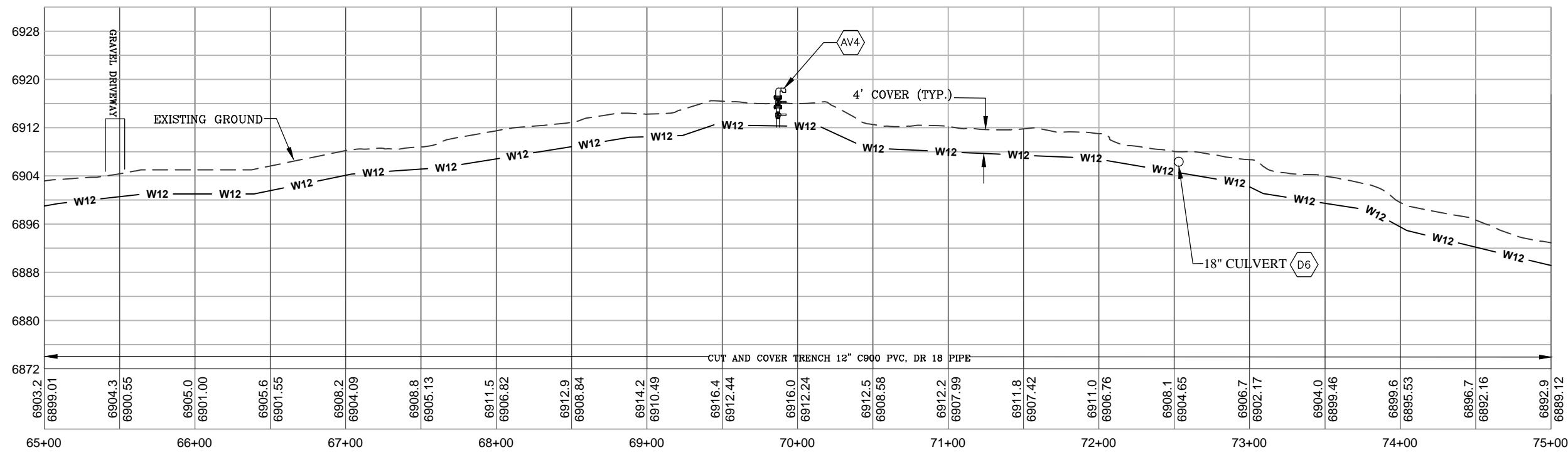


KEY NOTES
 CONTRACTOR TO VERIFY TAP SIZE AND LOCATION PRIOR TO INSTALL AT ALL PLACEMENTS SHOWN. SERVICE TAP LOCATIONS, QUANTITIES AND SIZES ARE SUBJECT TO CHANGE.

- AV4 INSTALL AIR VAC AT HIGH POINT PER STANDARD DETAILS SHEET 11.
- D6 EXTEND CULVERT SECTIONS OVER PIPELINE WHERE REQUIRED. MAINTAIN 4' MINIMUM COVER OVER PIPELINE.

GENERAL NOTES

- A ELEVATIONS SHOWN ARE APPROXIMATE AND MAY NOT BE ACCURATE AT TIME OF CONSTRUCTION. FIELD VERIFY.
- B STATIONING WILL BE SUBJECT TO ACTUAL FIELD CONDITIONS AND MAY VARY FROM THAT SHOWN.
- C CONTACT LPEA PRIOR TO WORK IF EXCAVATING WITHIN 5 FEET OF POWER POLES. MAINTAIN 5 FOOT SEPARATION BETWEEN POWER POLE AND WATERLINE.
- D ALL FITTINGS ARE STANDARD UNLESS NOTED OTHERWISE. HORIZONTAL BENDS NOT SHOWN ARE TO BE PROVIDED AT NO EXTRA COST.
- E PVI CHANGES MAY NOT REQUIRE FITTINGS. CHECK USABLE PIPE BEND RADIUS. USABLE PIPE BEND RADIUS NOT TO EXCEED 75% OF MANUFACTURERS RECOMMENDED ALLOWABLE.
- F ALL LEGS OF WATER LINES AT VALVES SHALL HAVE MECHANICAL JOINT RESTRAINT (MJR) IN THE FORM OF MEGALUG 2000 SERIES PV MJR.
- G CUTS WITHIN 4ft. OF EDGE OF ROAD TO BE FLOW FILLED TO WITHIN 6" OF TOP THEN 6" OF CLASS 6 AT 95% COMPACTION OR BACKFILLED WITH CLASS 6 ENTIRE DEPTH IN 12" LIFTS AT 95% COMPACTION VERIFIED BY TESTING.
- H CUTS IN ROAD SURFACE SHALL BE FLOW FILLED TO WITHIN 8" OF TOP SURFACE. THEN MATCH LPC STANDARDS OF COMPACTED ROAD BASE WITH MAG CHLORIDE FOR TOP 8".
- I MAINTAIN A MINIMUM 4' OF COVER OVER WATER LINES AT CULVERT CROSSINGS.



ELEVATIONS DERIVED FROM COUNTY GIS MAPS AND ARE FOR INFORMATIONAL PURPOSES ONLY. FIELD CONDITIONS MAY VARY.

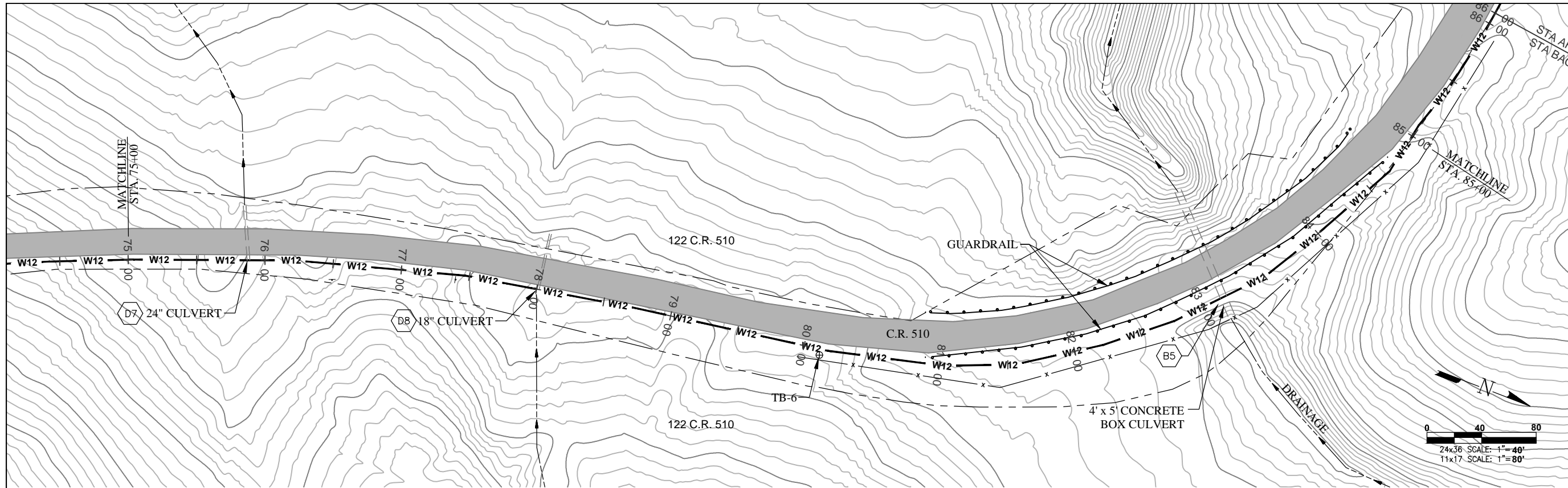


LA PLATA ARCHULETA WATER DISTRICT
PHASE 1E-2 WATER PIPELINE
PLAN AND PROFILE

CALL UTILITY NOTIFICATION
 CENTER OF COLORADO
 1-800-922-1987 OR (811)
 CALL 3 BUSINESS DAYS PRIOR
 TO ANY CONSTRUCTION.

HARRIS WATER ENGINEERING INC.
 954 East Second Ave.
 Durango, Co. 81303
 970-259-1028

DATE: 10/16/2016
 DRAWN BY: MG
 CHECKED BY: BS
 SHEET
 02 OF 11

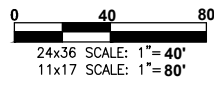
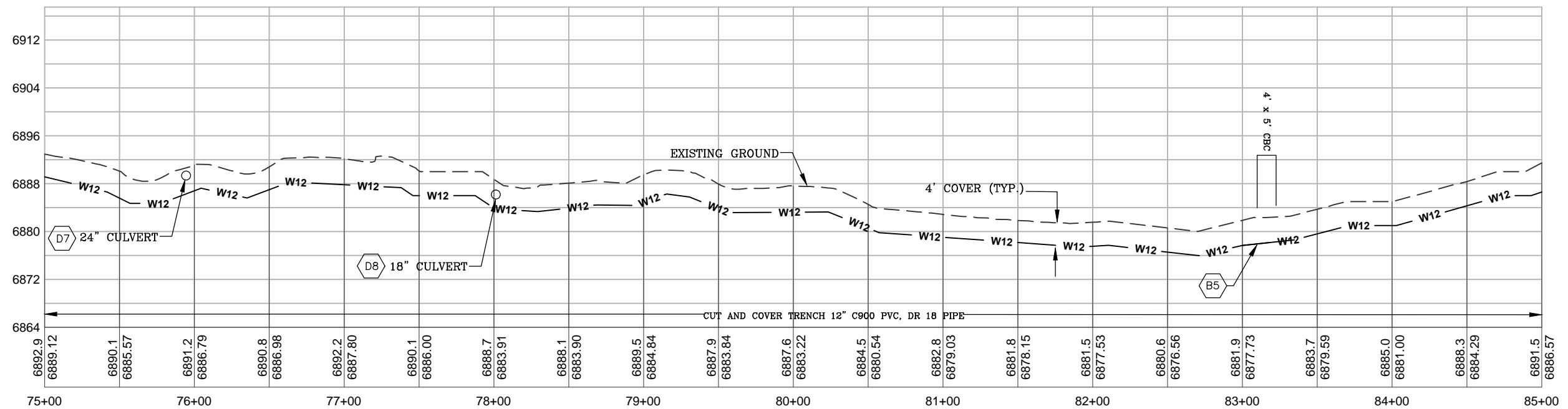
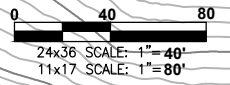


KEY NOTES
 CONTRACTOR TO VERIFY TAP SIZE AND LOCATION PRIOR TO INSTALL AT ALL PLACEMENTS SHOWN. SERVICE TAP LOCATIONS, QUANTITIES AND SIZES ARE SUBJECT TO CHANGE.

- D7 EXTEND CULVERT SECTIONS OVER PIPELINE WHERE REQUIRED. MAINTAIN 4' MINIMUM COVER OVER PIPELINE.
- D8
- B5 BORE UNDER CBC. MAINTAIN 4' MINIMUM COVER OVER PIPELINE.

GENERAL NOTES

- A ELEVATIONS SHOWN ARE APPROXIMATE AND MAY NOT BE ACCURATE AT TIME OF CONSTRUCTION. FIELD VERIFY.
- B STATIONING WILL BE SUBJECT TO ACTUAL FIELD CONDITIONS AND MAY VARY FROM THAT SHOWN.
- C CONTACT LPEA PRIOR TO WORK IF EXCAVATING WITHIN 5 FEET OF POWER POLES. MAINTAIN 5 FOOT SEPARATION BETWEEN POWER POLE AND WATERLINE.
- D ALL FITTINGS ARE STANDARD UNLESS NOTED OTHERWISE. HORIZONTAL BENDS NOT SHOWN ARE TO BE PROVIDED AT NO EXTRA COST.
- E PVI CHANGES MAY NOT REQUIRE FITTINGS, CHECK USABLE PIPE BEND RADIUS. USABLE PIPE BEND RADIUS NOT TO EXCEED 75% OF MANUFACTURERS RECOMMENDED ALLOWABLE.
- F ALL LEGS OF WATER LINES AT VALVES SHALL HAVE MECHANICAL JOINT RESTRAINT (MJR) IN THE FORM OF MEGALUG 2000 SERIES PV MJR.
- G CUTS WITHIN 4ft. OF EDGE OF ROAD TO BE FLOW FILLED TO WITHIN 6" OF TOP THEN 6" OF CLASS 6 AT 95% COMPACTION OR BACKFILLED WITH CLASS 6 ENTIRE DEPTH IN 12" LIFTS AT 95% COMPACTION VERIFIED BY TESTING.
- H CUTS IN ROAD SURFACE SHALL BE FLOW FILLED TO WITHIN 8" OF TOP SURFACE. THEN MATCH LPC STANDARDS OF COMPACTED ROAD BASE WITH MAG CHLORIDE FOR TOP 8".
- I MAINTAIN A MINIMUM 4' OF COVER OVER WATER LINES AT CULVERT CROSSINGS.



ELEVATIONS DERIVED FROM COUNTY GIS MAPS AND ARE FOR INFORMATIONAL PURPOSES ONLY. FIELD CONDITIONS MAY VARY.

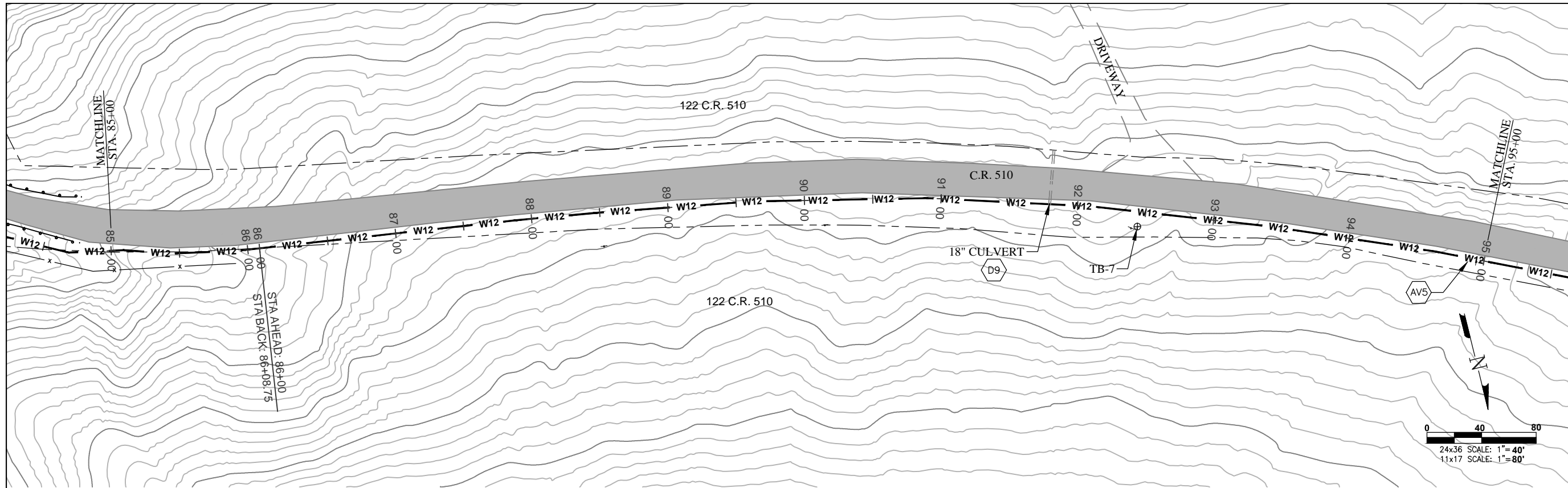


**LA PLATA ARCHULETA WATER DISTRICT
 PHASE 1E-2 WATER PIPELINE
 PLAN AND PROFILE**

CALL UTILITY NOTIFICATION
 CENTER OF COLORADO
 1-800-922-1987 OR (811)
 CALL 3 BUSINESS DAYS PRIOR
 TO ANY CONSTRUCTION.

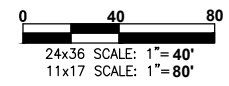
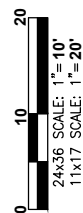
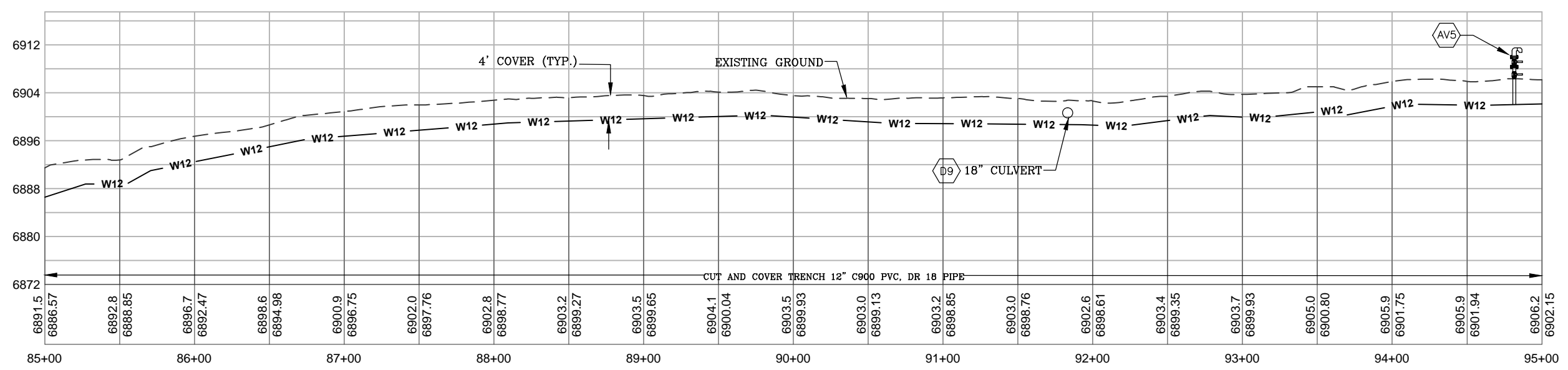
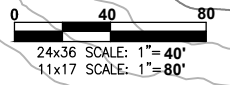
**HARRIS WATER
 ENGINEERING INC.**
 954 East Second Ave.
 Durango, Co. 81303
 970-259-1028

DATE: 10/16/2016
 DRAWN BY: MG
 CHECKED BY: BS
 SHEET
 03 OF 11



- KEY NOTES**
- "CONTRACTOR TO VERIFY TAP SIZE AND LOCATION PRIOR TO INSTALL AT ALL PLACEMENTS SHOWN. SERVICE TAP LOCATIONS, QUANTITIES AND SIZES ARE SUBJECT TO CHANGE."
- D9 EXTEND CULVERT SECTIONS OVER PIPELINE WHERE REQUIRED. MAINTAIN 4' MINIMUM COVER OVER PIPELINE.
 - AV5 INSTALL AIR VAC AT HIGH POINT PER STANDARD DETAILS SHEET 11.

- GENERAL NOTES**
- A ELEVATIONS SHOWN ARE APPROXIMATE AND MAY NOT BE ACCURATE AT TIME OF CONSTRUCTION. FIELD VERIFY.
 - B STATIONING WILL BE SUBJECT TO ACTUAL FIELD CONDITIONS AND MAY VARY FROM THAT SHOWN.
 - C CONTACT LPEA PRIOR TO WORK IF EXCAVATING WITHIN 5 FEET OF POWER POLES. MAINTAIN 5 FOOT SEPARATION BETWEEN POWER POLE AND WATERLINE.
 - D ALL FITTINGS ARE STANDARD UNLESS NOTED OTHERWISE. HORIZONTAL BENDS NOT SHOWN ARE TO BE PROVIDED AT NO EXTRA COST.
 - E PVI CHANGES MAY NOT REQUIRE FITTINGS, CHECK USABLE PIPE BEND RADIUS. USABLE PIPE BEND RADIUS NOT TO EXCEED 75% OF MANUFACTURERS RECOMMENDED ALLOWABLE.
 - F ALL LEGS OF WATER LINES AT VALVES SHALL HAVE MECHANICAL JOINT RESTRAINT (MJR) IN THE FORM OF MEGALUG 2000 SERIES PV MJR.
 - G CUTS WITHIN 4ft. OF EDGE OF ROAD TO BE FLOW FILLED TO WITHIN 6" OF TOP THEN 6" OF CLASS 6 AT 95% COMPACTION OR BACKFILLED WITH CLASS 6 ENTIRE DEPTH IN 12" LIFTS AT 95% COMPACTION VERIFIED BY TESTING.
 - H CUTS IN ROAD SURFACE SHALL BE FLOW FILLED TO WITHIN 8" OF TOP SURFACE. THEN MATCH LPC STANDARDS OF COMPACTED ROAD BASE WITH MAG CHLORIDE FOR TOP 8".
 - I MAINTAIN A MINIMUM 4' OF COVER OVER WATER LINES AT CULVERT CROSSINGS.



ELEVATIONS DERIVED FROM COUNTY GIS MAPS AND ARE FOR INFORMATIONAL PURPOSES ONLY. FIELD CONDITIONS MAY VARY.

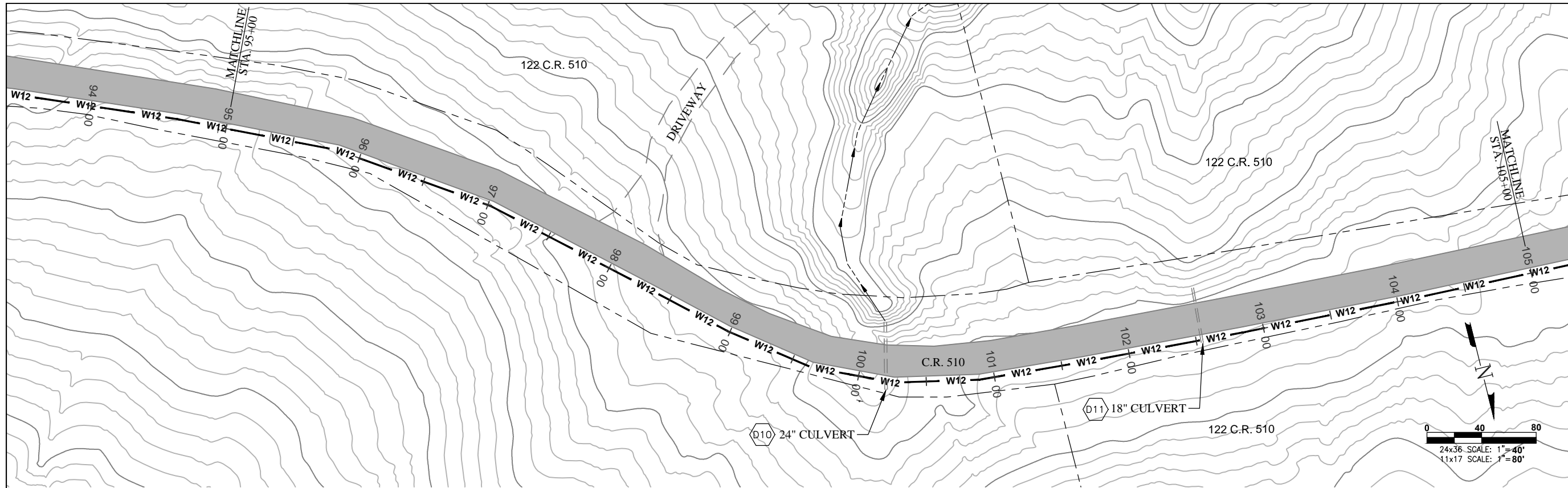


**LA PLATA ARCHULETA WATER DISTRICT
PHASE 1E-2 WATER PIPELINE
PLAN AND PROFILE**

CALL UTILITY NOTIFICATION
CENTER OF COLORADO
1-800-922-1987 OR (811)
CALL 3 BUSINESS DAYS PRIOR
TO ANY CONSTRUCTION.

**HARRIS WATER
ENGINEERING INC.**
954 East Second Ave.
Durango, Co. 81303
970-259-1028

DATE: 10/16/2016
DRAWN BY: MG
CHECKED BY: BS
SHEET
04 OF 11

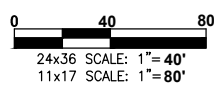
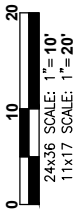
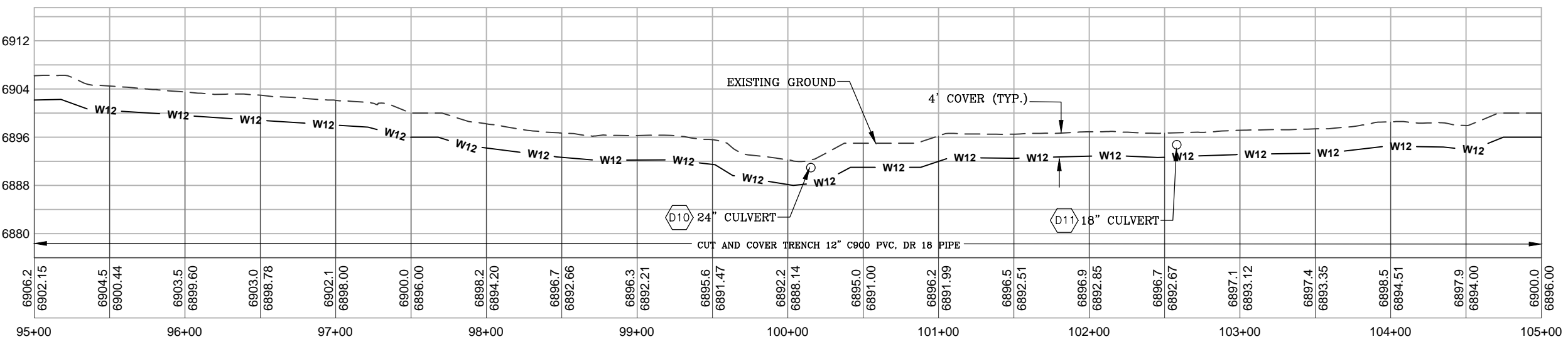
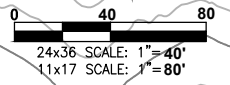


KEY NOTES
 CONTRACTOR TO VERIFY TAP SIZE AND LOCATION PRIOR TO INSTALL AT ALL PLACEMENTS SHOWN. SERVICE TAP LOCATIONS, QUANTITIES AND SIZES ARE SUBJECT TO CHANGE.

D10 EXTEND CULVERT SECTIONS OVER PIPELINE WHERE REQUIRED. MAINTAIN 4' MINIMUM COVER OVER PIPELINE.
 D11

GENERAL NOTES

- A ELEVATIONS SHOWN ARE APPROXIMATE AND MAY NOT BE ACCURATE AT TIME OF CONSTRUCTION. FIELD VERIFY.
- B STATIONING WILL BE SUBJECT TO ACTUAL FIELD CONDITIONS AND MAY VARY FROM THAT SHOWN.
- C CONTACT LPEA PRIOR TO WORK IF EXCAVATING WITHIN 5 FEET OF POWER POLES. MAINTAIN 5 FOOT SEPARATION BETWEEN POWER POLE AND WATERLINE.
- D ALL FITTINGS ARE STANDARD UNLESS NOTED OTHERWISE. HORIZONTAL BENDS NOT SHOWN ARE TO BE PROVIDED AT NO EXTRA COST.
- E PVI CHANGES MAY NOT REQUIRE FITTINGS. CHECK USABLE PIPE BEND RADIUS. USABLE PIPE BEND RADIUS NOT TO EXCEED 75% OF MANUFACTURERS RECOMMENDED ALLOWABLE.
- F ALL LEGS OF WATER LINES AT VALVES SHALL HAVE MECHANICAL JOINT RESTRAINT (MJR) IN THE FORM OF MEGALUG 2000 SERIES PV MJR.
- G CUTS WITHIN 4ft. OF EDGE OF ROAD TO BE FLOW FILLED TO WITHIN 6" OF TOP THEN 6" OF CLASS 6 AT 95% COMPACTION OR BACKFILLED WITH CLASS 6 ENTIRE DEPTH IN 12" LIFTS AT 95% COMPACTION VERIFIED BY TESTING.
- H CUTS IN ROAD SURFACE SHALL BE FLOW FILLED TO WITHIN 8" OF TOP SURFACE. THEN MATCH LPC STANDARDS OF COMPACTED ROAD BASE WITH MAG CHLORIDE FOR TOP 8".
- I MAINTAIN A MINIMUM 4' OF COVER OVER WATER LINES AT CULVERT CROSSINGS.



ELEVATIONS DERIVED FROM COUNTY GIS MAPS AND ARE FOR INFORMATIONAL PURPOSES ONLY. FIELD CONDITIONS MAY VARY.

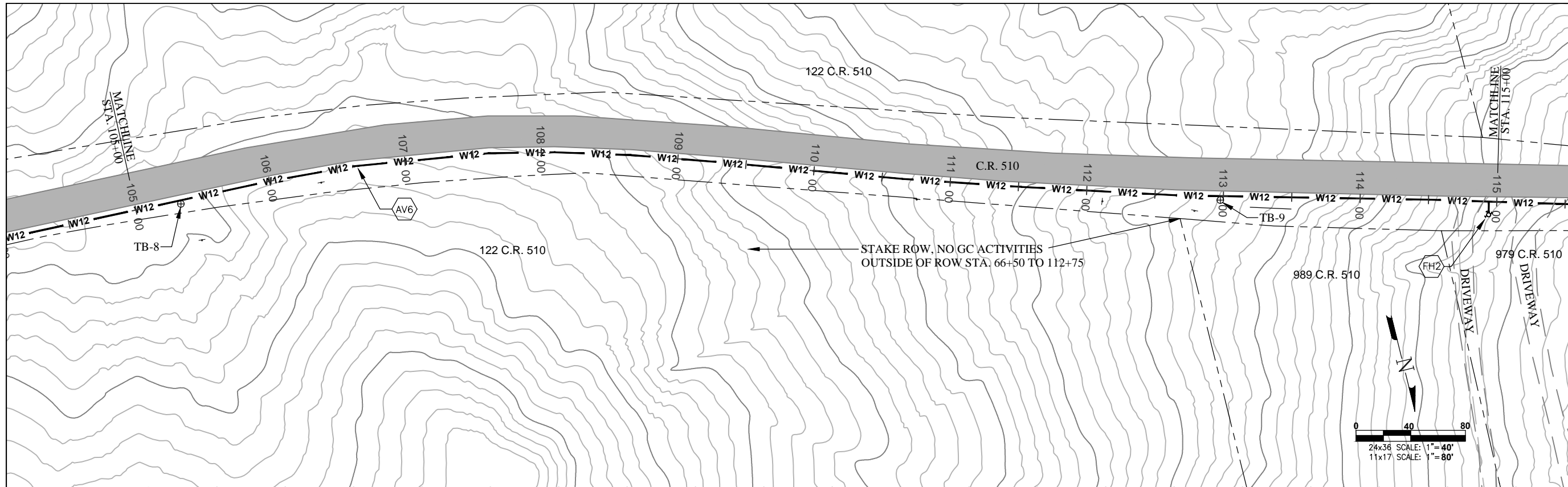


**LA PLATA ARCHULETA WATER DISTRICT
 PHASE 1E-2 WATER PIPELINE
 PLAN AND PROFILE**

CALL UTILITY NOTIFICATION
 CENTER OF COLORADO
 1-800-922-1987 OR (811)
 CALL 3 BUSINESS DAYS PRIOR
 TO ANY CONSTRUCTION.

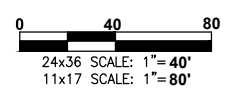
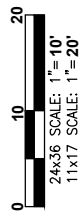
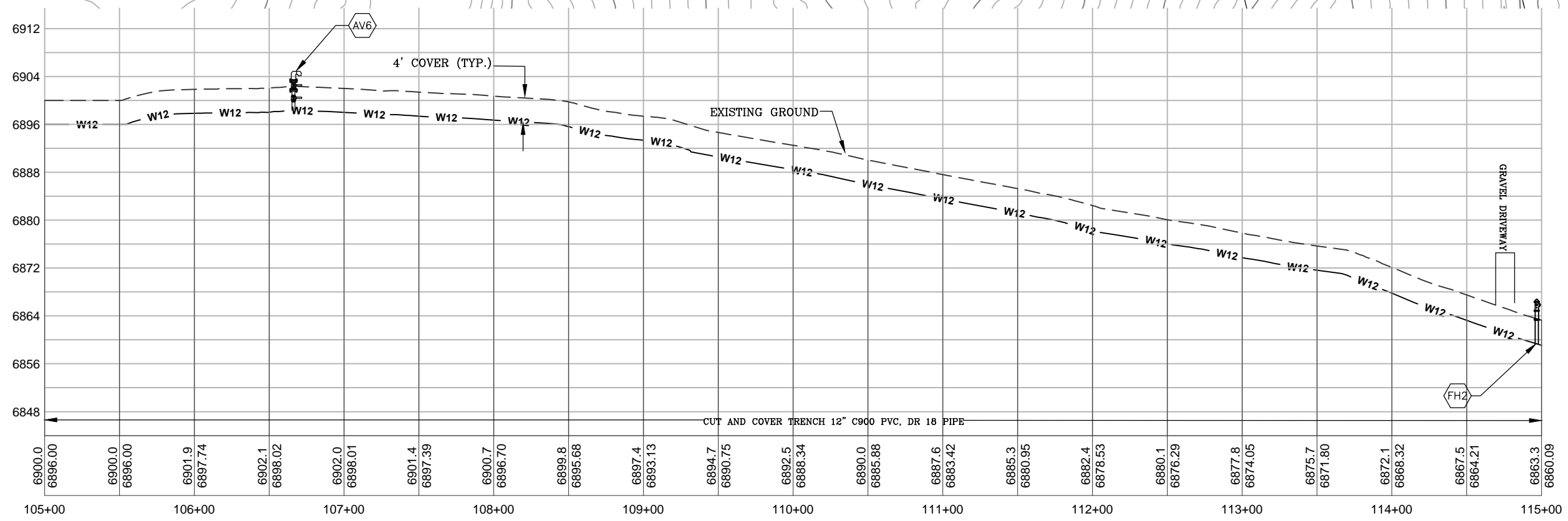
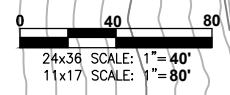
**HARRIS WATER
 ENGINEERING INC.**
 954 East Second Ave.
 Durango, Co. 81303
 970-259-1028

DATE: 10/16/2016
 DRAWN BY: MG
 CHECKED BY: BS
 SHEET
 05 OF 11



- KEY NOTES**
- "CONTRACTOR TO VERIFY TAP SIZE AND LOCATION PRIOR TO INSTALL AT ALL PLACEMENTS SHOWN. SERVICE TAP LOCATIONS, QUANTITIES AND SIZES ARE SUBJECT TO CHANGE."
- AV6 INSTALL AIR VAC AT HIGH POINT PER STANDARD DETAILS SHEET 11.
 - FH2 INSTALL FIRE HYDRANT OFF 12" MAIN 10 FEET FROM EDGE OF ROAD PER STANDARD DETAILS SHEET 8.

- GENERAL NOTES**
- A ELEVATIONS SHOWN ARE APPROXIMATE AND MAY NOT BE ACCURATE AT TIME OF CONSTRUCTION. FIELD VERIFY.
 - B STATIONING WILL BE SUBJECT TO ACTUAL FIELD CONDITIONS AND MAY VARY FROM THAT SHOWN.
 - C CONTACT LPEA PRIOR TO WORK IF EXCAVATING WITHIN 5 FEET OF POWER POLES. MAINTAIN 5 FOOT SEPARATION BETWEEN POWER POLE AND WATERLINE.
 - D ALL FITTINGS ARE STANDARD UNLESS NOTED OTHERWISE. HORIZONTAL BENDS NOT SHOWN ARE TO BE PROVIDED AT NO EXTRA COST.
 - E PVI CHANGES MAY NOT REQUIRE FITTINGS. CHECK USABLE PIPE BEND RADIUS. USABLE PIPE BEND RADIUS NOT TO EXCEED 75% OF MANUFACTURERS RECOMMENDED ALLOWABLE.
 - F ALL LEGS OF WATER LINES AT VALVES SHALL HAVE MECHANICAL JOINT RESTRAINT (MJR) IN THE FORM OF MEGALUG 2000 SERIES PV MJR.
 - G CUTS WITHIN 4ft. OF EDGE OF ROAD TO BE FLOW FILLED TO WITHIN 6" OF TOP THEN 6" OF CLASS 6 AT 95% COMPACTION OR BACKFILLED WITH CLASS 6 ENTIRE DEPTH IN 12" LIFTS AT 95% COMPACTION VERIFIED BY TESTING.
 - H CUTS IN ROAD SURFACE SHALL BE FLOW FILLED TO WITHIN 8" OF TOP SURFACE. THEN MATCH LPC STANDARDS OF COMPACTED ROAD BASE WITH MAG CHLORIDE FOR TOP 8".
 - I MAINTAIN A MINIMUM 4' OF COVER OVER WATER LINES AT CULVERT CROSSINGS.



ELEVATIONS DERIVED FROM COUNTY GIS MAPS AND ARE FOR INFORMATIONAL PURPOSES ONLY. FIELD CONDITIONS MAY VARY.

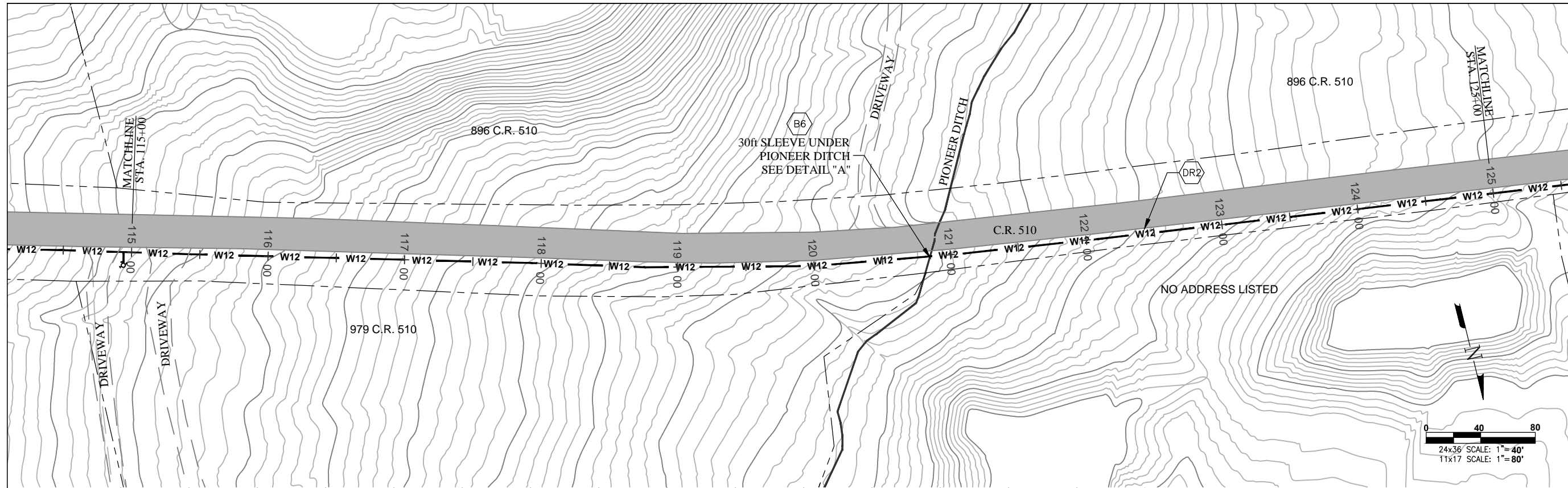


LA PLATA ARCHULETA WATER DISTRICT
PHASE 1E-2 WATER PIPELINE
PLAN AND PROFILE

CALL UTILITY NOTIFICATION
CENTER OF COLORADO
1-800-922-1987 OR (811)
CALL 3 BUSINESS DAYS PRIOR
TO ANY CONSTRUCTION.

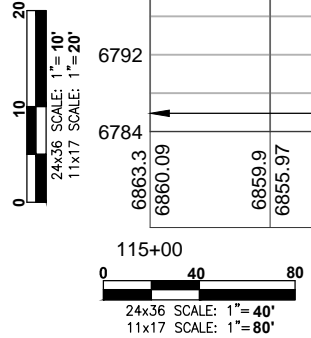
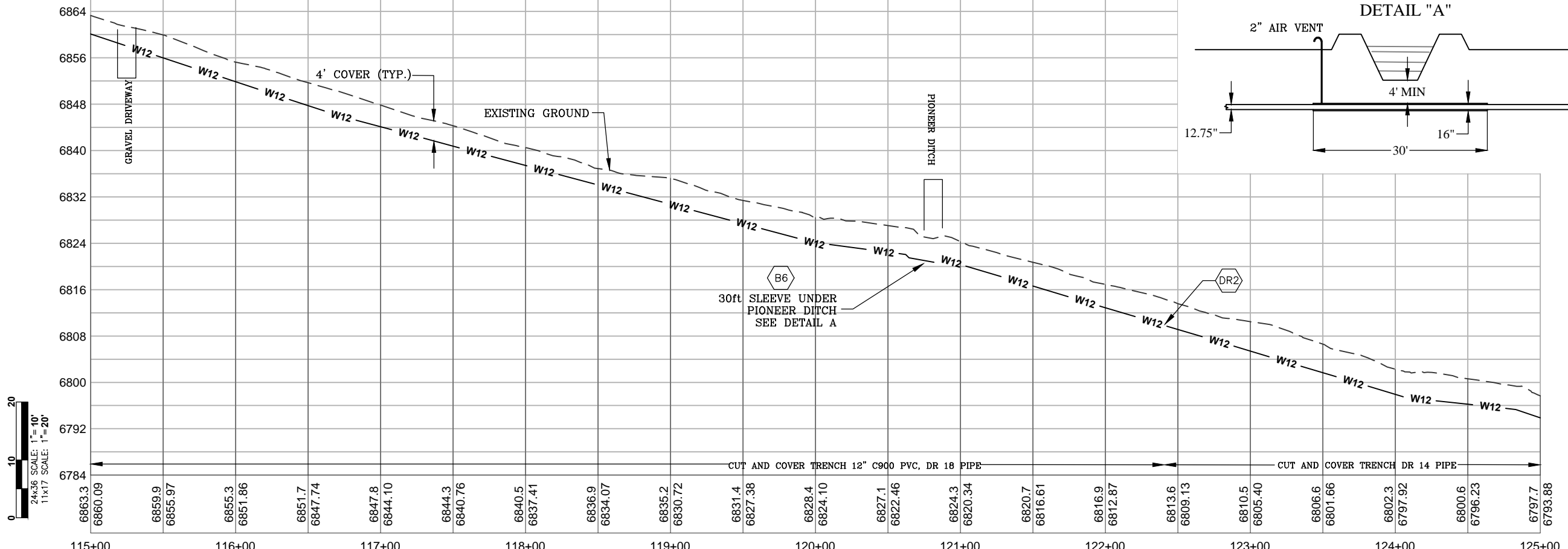
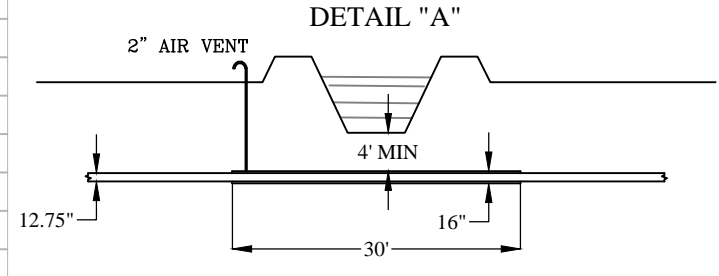
HARRIS WATER ENGINEERING INC.
954 East Second Ave.
Durango, Co. 81303
970-259-1028

DATE: 10/16/2016
DRAWN BY: MG
CHECKED BY: BS
SHEET
06 OF 11



- KEY NOTES**
- "CONTRACTOR TO VERIFY TAP SIZE AND LOCATION PRIOR TO INSTALL AT ALL PLACEMENTS SHOWN. SERVICE TAP LOCATIONS, QUANTITIES AND SIZES ARE SUBJECT TO CHANGE."
 - DR2 PIPE TRANSITION, ALL PIPE AT ELEVATIONS BELOW 6810.0' SHALL BE CLASS 225 (DR-14 FOR C-900 PVC).
 - B6 BORE UNDER PIONEER DITCH AND SLEEVE WITH STEEL CASING. MAINTAIN 4' MINIMUM COVER OVER PIPELINE. REFER TO DETAIL "A" THIS SHEET.

- GENERAL NOTES**
- A ELEVATIONS SHOWN ARE APPROXIMATE AND MAY NOT BE ACCURATE AT TIME OF CONSTRUCTION. FIELD VERIFY.
 - B STATIONING WILL BE SUBJECT TO ACTUAL FIELD CONDITIONS AND MAY VARY FROM THAT SHOWN.
 - C CONTACT LPEA PRIOR TO WORK IF EXCAVATING WITHIN 5 FEET OF POWER POLES. MAINTAIN 5 FOOT SEPARATION BETWEEN POWER POLE AND WATERLINE.
 - D ALL FITTINGS ARE STANDARD UNLESS NOTED OTHERWISE. HORIZONTAL BENDS NOT SHOWN ARE TO BE PROVIDED AT NO EXTRA COST.
 - E PVI CHANGES MAY NOT REQUIRE FITTINGS, CHECK USABLE PIPE BEND RADIUS. USABLE PIPE BEND RADIUS NOT TO EXCEED 75% OF MANUFACTURERS RECOMMENDED ALLOWABLE.
 - F ALL LEGS OF WATER LINES AT VALVES SHALL HAVE MECHANICAL JOINT RESTRAINT (MJR) IN THE FORM OF MEGALUG 2000 SERIES PV MJR.
 - G CUTS WITHIN 4ft. OF EDGE OF ROAD TO BE FLOW FILLED TO WITHIN 6" OF TOP THEN 6" OF CLASS 6 AT 95% COMPACTION OR BACKFILLED WITH CLASS 6 ENTIRE DEPTH IN 12" LIFTS AT 95% COMPACTION VERIFIED BY TESTING.
 - H CUTS IN ROAD SURFACE SHALL BE FLOW FILLED TO WITHIN 8" OF TOP SURFACE. THEN MATCH LPC STANDARDS OF COMPACTED ROAD BASE WITH MAG CHLORIDE FOR TOP 8".
 - I MAINTAIN A MINIMUM 4" OF COVER OVER WATER LINES AT CULVERT CROSSINGS.



ELEVATIONS DERIVED FROM COUNTY GIS MAPS AND ARE FOR INFORMATIONAL PURPOSES ONLY. FIELD CONDITIONS MAY VARY.

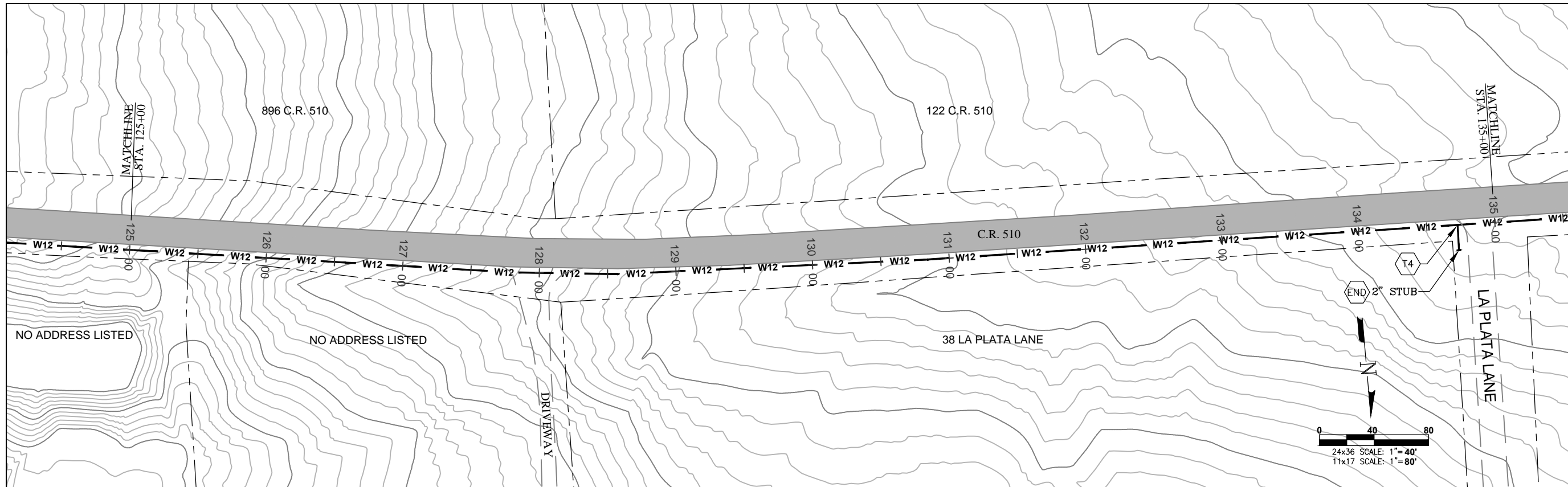


LA PLATA ARCHULETA WATER DISTRICT
PHASE 1E-2 WATER PIPELINE
PLAN AND PROFILE

CALL UTILITY NOTIFICATION
 CENTER OF COLORADO
 1-800-922-1987 OR (811)
 CALL 3 BUSINESS DAYS PRIOR
 TO ANY CONSTRUCTION.

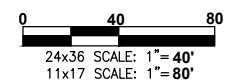
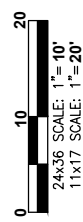
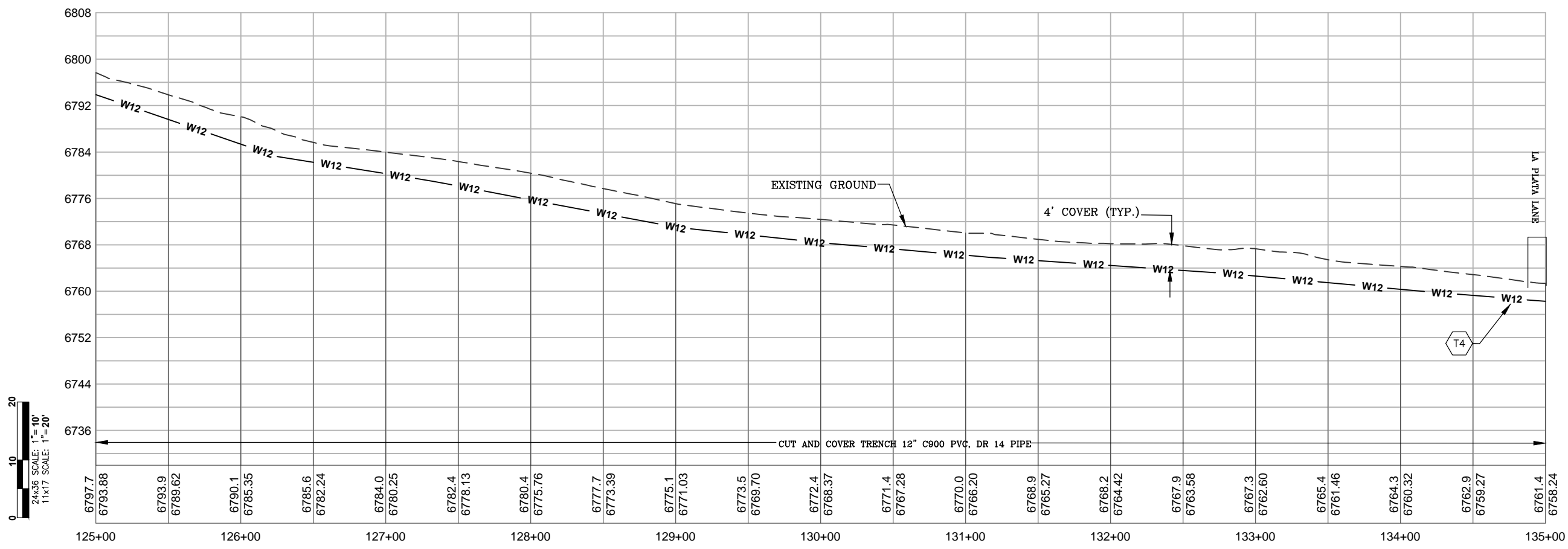
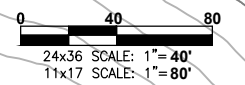
HARRIS WATER ENGINEERING INC.
 954 East Second Ave.
 Durango, Co. 81303
 970-259-1028

DATE: 10/16/2016
 DRAWN BY: MG
 CHECKED BY: BS
 SHEET
 07 OF 11



- KEY NOTES**
- "CONTRACTOR TO VERIFY TAP SIZE AND LOCATION PRIOR TO INSTALL AT ALL PLACEMENTS SHOWN. SERVICE TAP LOCATIONS, QUANTITIES AND SIZES ARE SUBJECT TO CHANGE."
- END INSTALL 3" PIPE AND BLOW-OFF PER STANDARD DETAILS SHEET 13, INSTALL FIBERGLASS MARKER AT END OF LINE.
 - T4 INSTALL 12x12x2 TEE (NO GATE VALVES) PER STANDARD DETAILS SHEET 10.

- GENERAL NOTES**
- A ELEVATIONS SHOWN ARE APPROXIMATE AND MAY NOT BE ACCURATE AT TIME OF CONSTRUCTION. FIELD VERIFY.
 - B STATIONING WILL BE SUBJECT TO ACTUAL FIELD CONDITIONS AND MAY VARY FROM THAT SHOWN.
 - C CONTACT LPEA PRIOR TO WORK IF EXCAVATING WITHIN 5 FEET OF POWER POLES. MAINTAIN 5 FOOT SEPARATION BETWEEN POWER POLE AND WATERLINE.
 - D ALL FITTINGS ARE STANDARD UNLESS NOTED OTHERWISE. HORIZONTAL BENDS NOT SHOWN ARE TO BE PROVIDED AT NO EXTRA COST.
 - E PVI CHANGES MAY NOT REQUIRE FITTINGS. CHECK USABLE PIPE BEND RADIUS. USABLE PIPE BEND RADIUS NOT TO EXCEED 75% OF MANUFACTURERS RECOMMENDED ALLOWABLE.
 - F ALL LEGS OF WATER LINES AT VALVES SHALL HAVE MECHANICAL JOINT RESTRAINT (MJR) IN THE FORM OF MEGALUG 2000 SERIES PV MJR.
 - G CUTS WITHIN 4ft. OF EDGE OF ROAD TO BE FLOW FILLED TO WITHIN 6" OF TOP THEN 6" OF CLASS 6 AT 95% COMPACTION OR BACKFILLED WITH CLASS 6 ENTIRE DEPTH IN 12" LIFTS AT 95% COMPACTION VERIFIED BY TESTING.
 - H CUTS IN ROAD SURFACE SHALL BE FLOW FILLED TO WITHIN 8" OF TOP SURFACE. THEN MATCH LPC STANDARDS OF COMPACTED ROAD BASE WITH MAG CHLORIDE FOR TOP 8".
 - I MAINTAIN A MINIMUM 4' OF COVER OVER WATER LINES AT CULVERT CROSSINGS.



ELEVATIONS DERIVED FROM COUNTY GIS MAPS AND ARE FOR INFORMATIONAL PURPOSES ONLY. FIELD CONDITIONS MAY VARY.

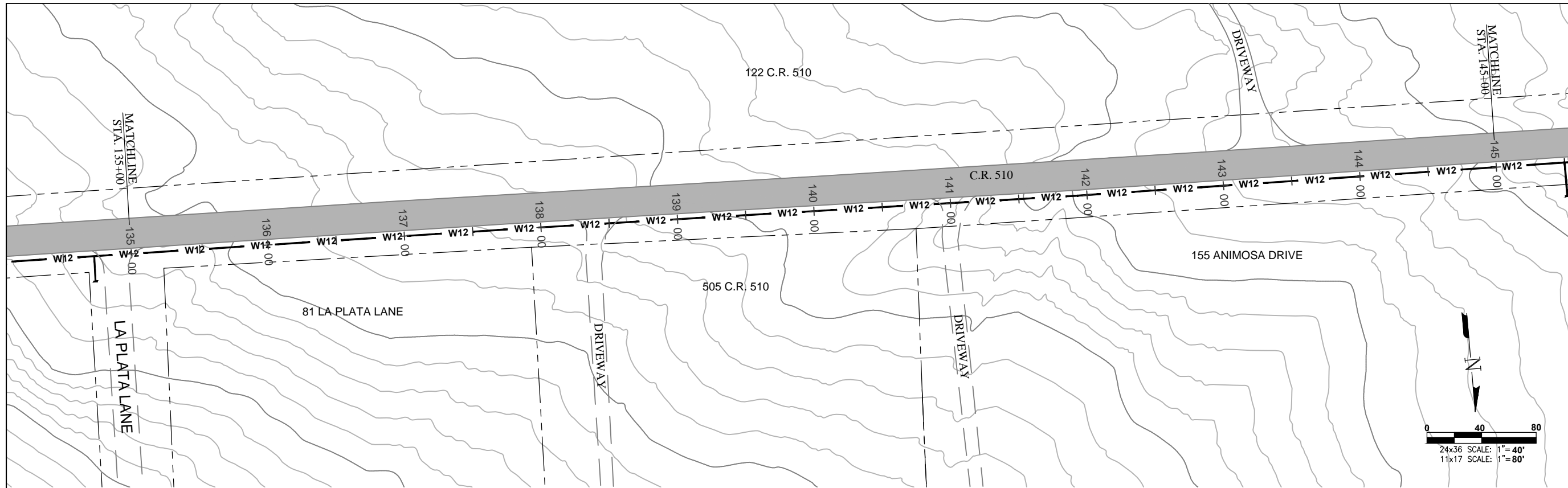


LA PLATA ARCHULETA WATER DISTRICT
PHASE 1E-2 WATER PIPELINE
PLAN AND PROFILE

CALL UTILITY NOTIFICATION
 CENTER OF COLORADO
 1-800-922-1987 OR (811)
 CALL 3 BUSINESS DAYS PRIOR
 TO ANY CONSTRUCTION.

HARRIS WATER ENGINEERING INC.
 954 East Second Ave.
 Durango, Co. 81303
 970-259-1028

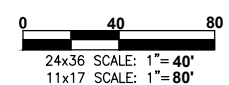
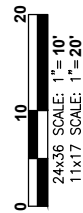
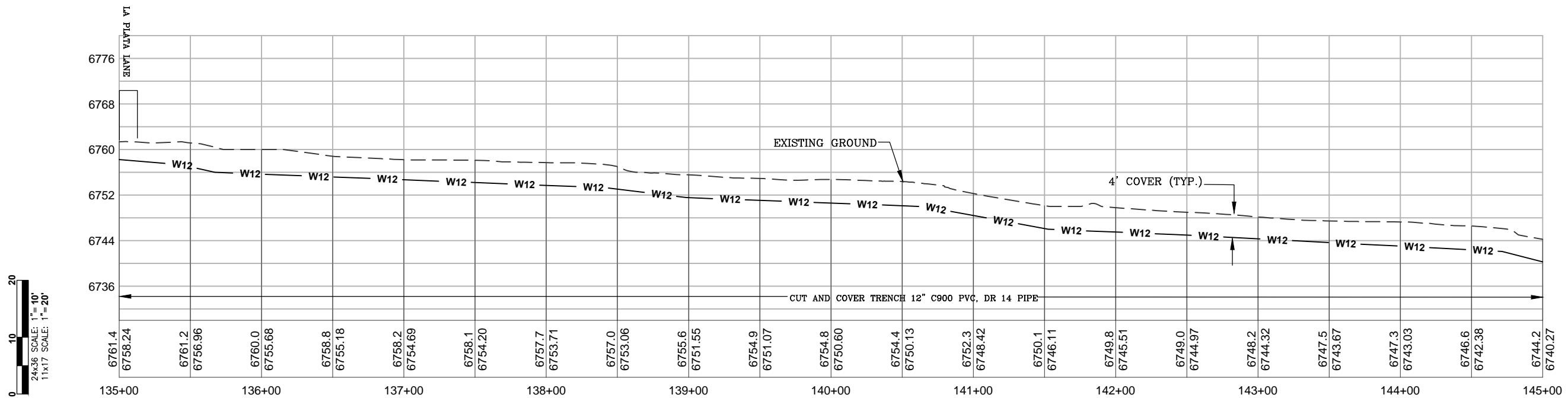
DATE: 10/16/2016
 DRAWN BY: MG
 CHECKED BY: BS
 SHEET
 08 OF 11



KEY NOTES
 "CONTRACTOR TO VERIFY TAP SIZE AND LOCATION PRIOR TO INSTALL AT ALL PLACEMENTS SHOWN. SERVICE TAP LOCATIONS, QUANTITIES AND SIZES ARE SUBJECT TO CHANGE."

GENERAL NOTES

- A ELEVATIONS SHOWN ARE APPROXIMATE AND MAY NOT BE ACCURATE AT TIME OF CONSTRUCTION. FIELD VERIFY.
- B STATIONING WILL BE SUBJECT TO ACTUAL FIELD CONDITIONS AND MAY VARY FROM THAT SHOWN.
- C CONTACT LPEA PRIOR TO WORK IF EXCAVATING WITHIN 5 FEET OF POWER POLES. MAINTAIN 5 FOOT SEPARATION BETWEEN POWER POLE AND WATERLINE.
- D ALL FITTINGS ARE STANDARD UNLESS NOTED OTHERWISE. HORIZONTAL BENDS NOT SHOWN ARE TO BE PROVIDED AT NO EXTRA COST.
- E PVI CHANGES MAY NOT REQUIRE FITTINGS, CHECK USABLE PIPE BEND RADIUS. USABLE PIPE BEND RADIUS NOT TO EXCEED 75% OF MANUFACTURERS RECOMMENDED ALLOWABLE.
- F ALL LEGS OF WATER LINES AT VALVES SHALL HAVE MECHANICAL JOINT RESTRAINT (MJR) IN THE FORM OF MEGALUG 2000 SERIES PV MJR.
- G CUTS WITHIN 4ft. OF EDGE OF ROAD TO BE FLOW FILLED TO WITHIN 6" OF TOP THEN 6" OF CLASS 6 AT 95% COMPACTION OR BACKFILLED WITH CLASS 6 ENTIRE DEPTH IN 12" LIFTS AT 95% COMPACTION VERIFIED BY TESTING.
- H CUTS IN ROAD SURFACE SHALL BE FLOW FILLED TO WITHIN 8" OF TOP SURFACE. THEN MATCH LPC STANDARDS OF COMPACTED ROAD BASE WITH MAG CHLORIDE FOR TOP 8".
- I MAINTAIN A MINIMUM 4' OF COVER OVER WATER LINES AT CULVERT CROSSINGS.



ELEVATIONS DERIVED FROM COUNTY GIS MAPS AND ARE FOR INFORMATIONAL PURPOSES ONLY. FIELD CONDITIONS MAY VARY.

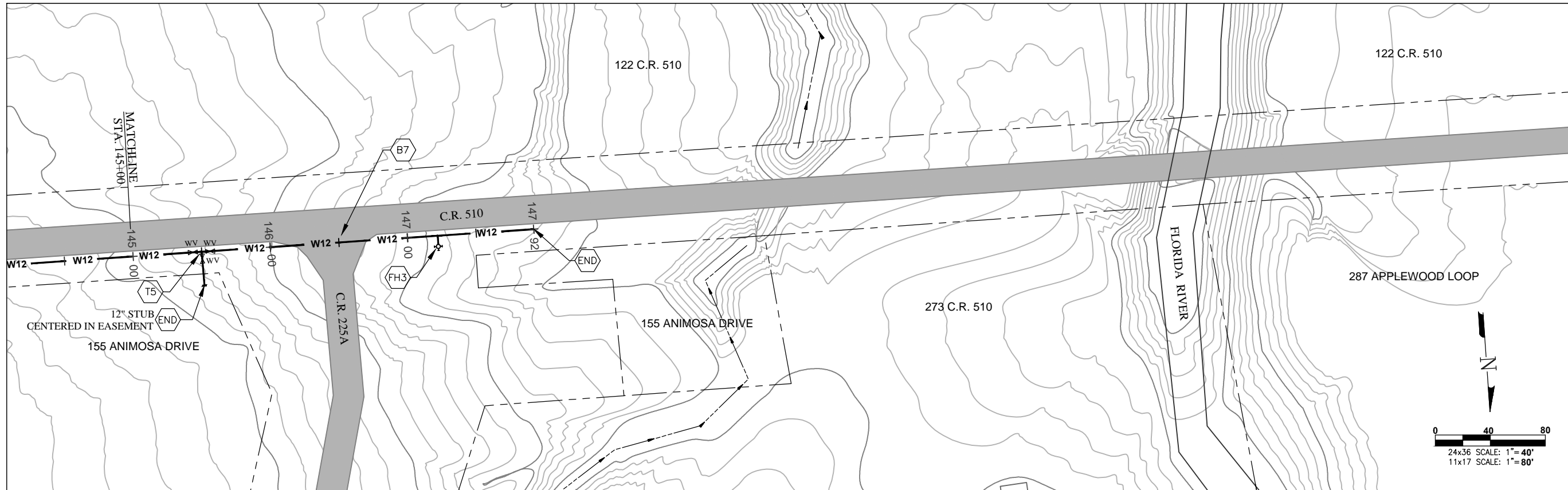


**LA PLATA ARCHULETA WATER DISTRICT
 PHASE 1E-2 WATER PIPELINE
 PLAN AND PROFILE**

CALL UTILITY NOTIFICATION
 CENTER OF COLORADO
 1-800-922-1987 OR (811)
 CALL 3 BUSINESS DAYS PRIOR
 TO ANY CONSTRUCTION.

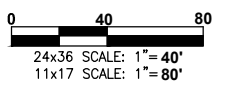
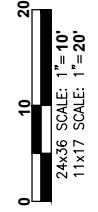
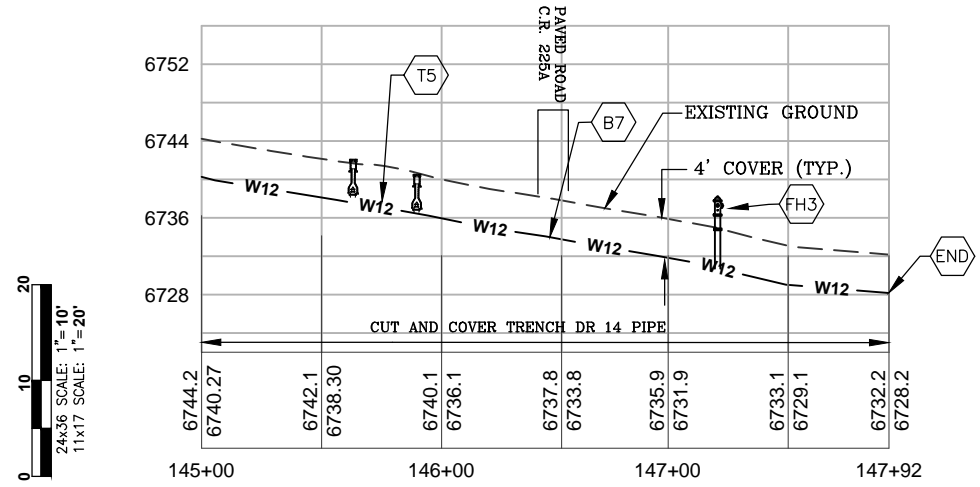
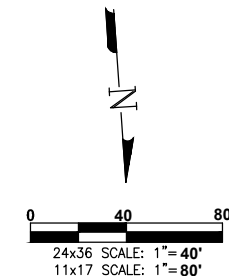
**HARRIS WATER
 ENGINEERING INC.**
 954 East Second Ave.
 Durango, Co. 81303
 970-259-1028

DATE: 10/16/2016
 DRAWN BY: MG
 CHECKED BY: BS
 SHEET
 09 OF 11



- KEY NOTES**
- "CONTRACTOR TO VERIFY TAP SIZE AND LOCATION PRIOR TO INSTALL AT ALL PLACEMENTS SHOWN. SERVICE TAP LOCATIONS, QUANTITIES AND SIZES ARE SUBJECT TO CHANGE."
- (FH3) INSTALL FIRE HYDRANT OFF 12" MAIN 10 FEET FROM EDGE OF ROAD PER STANDARD DETAILS SHEET 8.
 - (END) INSTALL 3" PIPE AND BLOW-OFF PER STANDARD DETAILS SHEET 13, INSTALL FIBERGLASS MARKER AT END OF LINE.
 - (T5) INSTALL 12x12x12 TEE WITH 12" GATE VALVES ON ALL LEGS. PER STANDARD DETAILS SHEET 10.
 - (B7) BORE UNDER C.R. 225A AND SLEEVE WITH STEEL CASING. MAINTAIN 4' MINIMUM COVER OVER PIPELINE.

- GENERAL NOTES**
- A ELEVATIONS SHOWN ARE APPROXIMATE AND MAY NOT BE ACCURATE AT TIME OF CONSTRUCTION. FIELD VERIFY.
 - B STATIONING WILL BE SUBJECT TO ACTUAL FIELD CONDITIONS AND MAY VARY FROM THAT SHOWN.
 - C CONTACT LPEA PRIOR TO WORK IF EXCAVATING WITHIN 5 FEET OF POWER POLES. MAINTAIN 5 FOOT SEPARATION BETWEEN POWER POLE AND WATERLINE.
 - D ALL FITTINGS ARE STANDARD UNLESS NOTED OTHERWISE. HORIZONTAL BENDS NOT SHOWN ARE TO BE PROVIDED AT NO EXTRA COST.
 - E PVI CHANGES MAY NOT REQUIRE FITTINGS, CHECK USABLE PIPE BEND RADIUS. USABLE PIPE BEND RADIUS NOT TO EXCEED 75% OF MANUFACTURERS RECOMMENDED ALLOWABLE.
 - F ALL LEGS OF WATER LINES AT VALVES SHALL HAVE MECHANICAL JOINT RESTRAINT (MJR) IN THE FORM OF MEGALUG 2000 SERIES PV MJR.
 - G CUTS WITHIN 4ft. OF EDGE OF ROAD TO BE FLOW FILLED TO WITHIN 6" OF TOP THEN 6" OF CLASS 6 AT 95% COMPACTION OR BACKFILLED WITH CLASS 6 ENTIRE DEPTH IN 12" LIFTS AT 95% COMPACTION VERIFIED BY TESTING.
 - H CUTS IN ROAD SURFACE SHALL BE FLOW FILLED TO WITHIN 8" OF TOP SURFACE. THEN MATCH LPC STANDARDS OF COMPACTED ROAD BASE WITH MAG CHLORIDE FOR TOP 8".
 - I MAINTAIN A MINIMUM 4' OF COVER OVER WATER LINES AT CULVERT CROSSINGS.



ELEVATIONS DERIVED FROM COUNTY GIS MAPS AND ARE FOR INFORMATIONAL PURPOSES ONLY. FIELD CONDITIONS MAY VARY.



LA PLATA ARCHULETA WATER DISTRICT
PHASE 1E-2 WATER PIPELINE
PLAN AND PROFILE

CALL UTILITY NOTIFICATION
 CENTER OF COLORADO
 1-800-922-1987 OR (811)
 CALL 3 BUSINESS DAYS PRIOR
 TO ANY CONSTRUCTION.

HARRIS WATER ENGINEERING INC.
 954 East Second Ave.
 Durango, Co. 81303
 970-259-1028

DATE: 10/16/2016
 DRAWN BY: MG
 CHECKED BY: BS
 SHEET
 10 OF 11



**LA PLATA ARCHULETA WATER DISTRICT
PHASE 1E-2 WATER PIPELINE
SHEET LOCATIONS**

CALL UTILITY NOTIFICATION
CENTER OF COLORADO
1-800-922-1987 OR (811)
CALL 3 BUSINESS DAYS PRIOR
TO ANY CONSTRUCTION.

**HARRIS WATER
ENGINEERING INC.**
954 East Second Ave.
Durango, Co. 81303
970-259-1028

DATE: 10/16/2016
DRAWN BY: MG
CHECKED BY: BS

SHEET
11 OF 11