

PROJECT LOCATION MAP  
N.T.S.

# LA PLATA ARCHULETA WATER DISTRICT WATER LINES WATER HAUL STATION

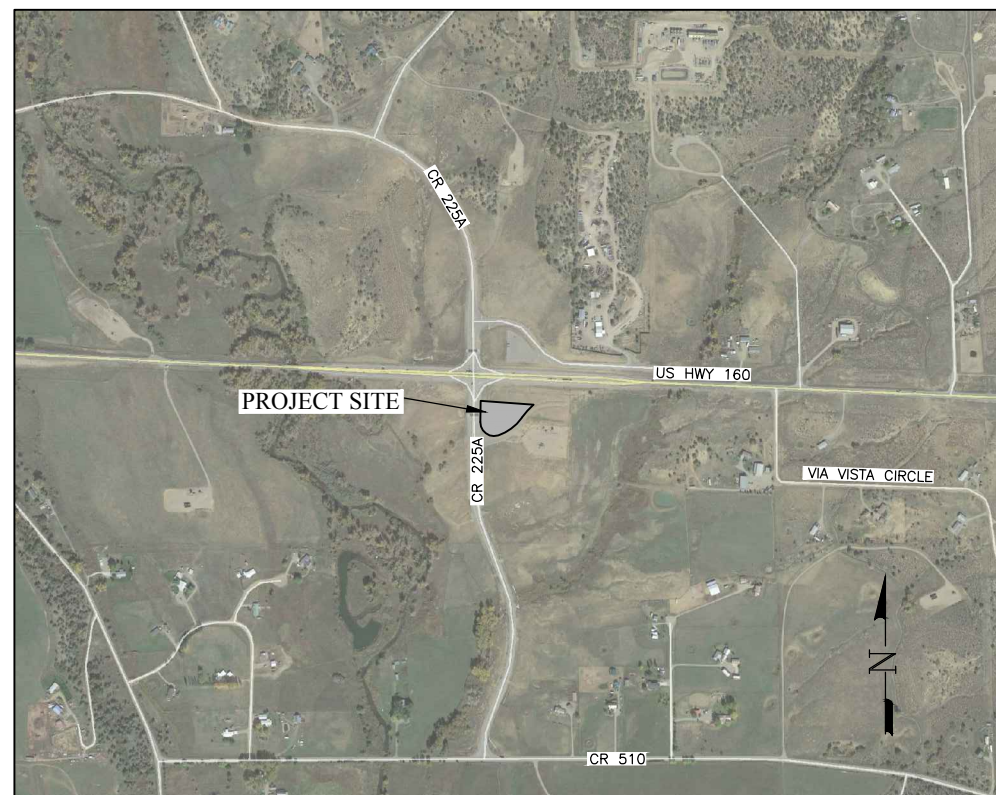
La Plata County, Colorado

**PROJECT DESCRIPTION:**

Construction of a Bulk Water Hauling Loading Station (Water Dock)

Includes:

- ◆ Site Preparation
- ◆ Site Grading
- ◆ Installation of Base Course
- ◆ Installation of new water service (from existing 12"Ø C-900 PVC)
- ◆ Installation of Conduit For Electrical and Communication wiring
- ◆ Installation of overflow collection drain
- ◆ Installation of new concrete
- ◆ Installation of new driveway (concrete)
- ◆ Installation of landscaping (re-seeding disturbed areas)
- ◆ All grading and prep work.
- ◆ Surveying for construction activities



PROJECT KEY MAP  
N.T.S.

**SHEET DESCRIPTION**

- 1.....COVER SHEET
- 2.....GENERAL NOTES
- 3.....SITE PLAN
- 4.....CONTROL AND STAKEOUT POINTS
- 5.....WATER STATION DETAILS
- 6.....EQUIPMENT PIPING DETAILS



## LA PLATA ARCHULETA WATER DISTRICT WATER HAUL STATION COVER SHEET

CALL UTILITY NOTIFICATION  
CENTER OF COLORADO  
1-800-922-1987 OR (811)  
CALL 3 BUSINESS DAYS PRIOR  
TO ANY CONSTRUCTION.

**HARRIS WATER  
ENGINEERING INC.**  
954 East Second Ave.  
Durango, Co. 81303  
970-259-1028

DATE: 8/20/2018  
DATE:  
DRAWN BY: RP  
CHECKED BY: BS

SHEET  
1 OF 6

GENERAL NOTES

- A ELEVATIONS SHOWN ARE APPROXIMATE AND WERE ESTABLISHED FROM THE BEST AVAILABLE INFORMATION. THEY ARE FOR INFORMATIONAL PURPOSES ONLY. FIELD CONDITIONS MAY VARY.
- B CONTACT LPEA PRIOR TO WORK IF EXCAVATING WITHIN 5 FEET OF POWER POLES.
- C ALL FITTINGS ARE STANDARD UNLESS NOTED OTHERWISE. HORIZONTAL BENDS NOT SHOWN ARE TO BE PROVIDED AT NO EXTRA COST.
- D PI DEFLECTIONS MAY NOT REQUIRE FITTINGS, CHECK USABLE PIPE BEND RADIUS. USABLE PIPE BEND RADIUS NOT TO EXCEED 75% OF MANUFACTURERS RECOMMENDED ALLOWABLE.
- E CUTS WITHIN 4 FEET OF EDGE OF ROAD TO BE FLOW FILLED TO WITHIN 6" OF TOP THEN 6" OF CLASS 6 AT 95% COMPACTION OR BACKFILLED WITH CLASS 6 ENTIRE DEPTH IN 12" LIFTS AT 95% COMPACTION VERIFIED BY TESTING.
- F PIPELINES INSTALLED ACROSS PAVED ROAD SURFACES SHALL BE BY BORING METHOD PER STANDARD DETAILS AND SPECS.
- G PIPING INSTALLED WITHIN CDOT ROW SHALL HAVE A MINIMUM OF 5 FEET OF COVER. PIPING INSTALLED OUTSIDE OF CDOT ROW SHALL HAVE A MINIMUM OF 4 FEET OF COVER.
- H CONTRACTOR TO VERIFY TAP SIZE AND LOCATION PRIOR TO INSTALLATION.
- I ALL WORK SHALL BE COMPLETED IN ACCORDANCE WITH THE LA PLATA ARCHULETA WATER DISTRICT STANDARD DETAILS AND SPECIFICATIONS, LATEST REVISIONS, UNLESS OTHERWISE STATED IN THE PLANS.
- J THE LOCATION OF UTILITIES AS SHOWN ON THE PLANS WERE ESTABLISHED FROM THE BEST AVAILABLE INFORMATION. ALL UTILITIES ARE NOT NECESSARILY SHOWN ON THE PLANS AND THE CONTRACTOR WILL BE RESPONSIBLE FOR LOCATES PRIOR TO ANY EXCAVATION. COMPROMISING OF UTILITY LINES OR EQUIPMENT DUE TO THE CONTRACTOR'S NEGLIGENCE ARE TO BE REMEDIATED AT THE CONTRACTOR'S EXPENSE WITHOUT COST TO THE WATER DISTRICT.
- K ALL CONCRETE SHALL BE 3,500 PSI @28 DAYS. REFERENCE SECTION 03100 OF LAPLAWD TECHNICAL DETAILS FOR ADDITIONAL CONCRETE REQUIREMENTS.



**LA PLATA ARCHULETA WATER DISTRICT  
WATER HAUL STATION  
GENERAL NOTES**

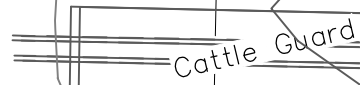
CALL UTILITY NOTIFICATION  
CENTER OF COLORADO  
1-800-922-1987 OR (811)  
CALL 3 BUSINESS DAYS PRIOR  
TO ANY CONSTRUCTION.

**HARRIS WATER  
ENGINEERING INC.**  
954 East Second Ave.  
Durango, Co. 81303  
970-259-1028

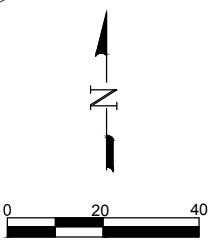
DATE: 8/20/2018  
DATE:  
DRAWN BY:  
CHECKED BY:

SHEET  
2 OF 6

Parcel No. 3REV-EX  
0.59 Acres  
25899 Sq. Feet



C.R. 225A



ELEVATIONS DERIVED FROM COUNTY GIS MAPS AND ARE FOR INFORMATIONAL PURPOSES ONLY. FIELD CONDITIONS MAY VARY.



## LA PLATA ARCHULETA WATER DISTRICT WATER HAUL STATION SITE PLAN

CALL UTILITY NOTIFICATION  
CENTER OF COLORADO  
1-800-922-1987 OR (811)  
CALL 3 BUSINESS DAYS PRIOR  
TO ANY CONSTRUCTION.

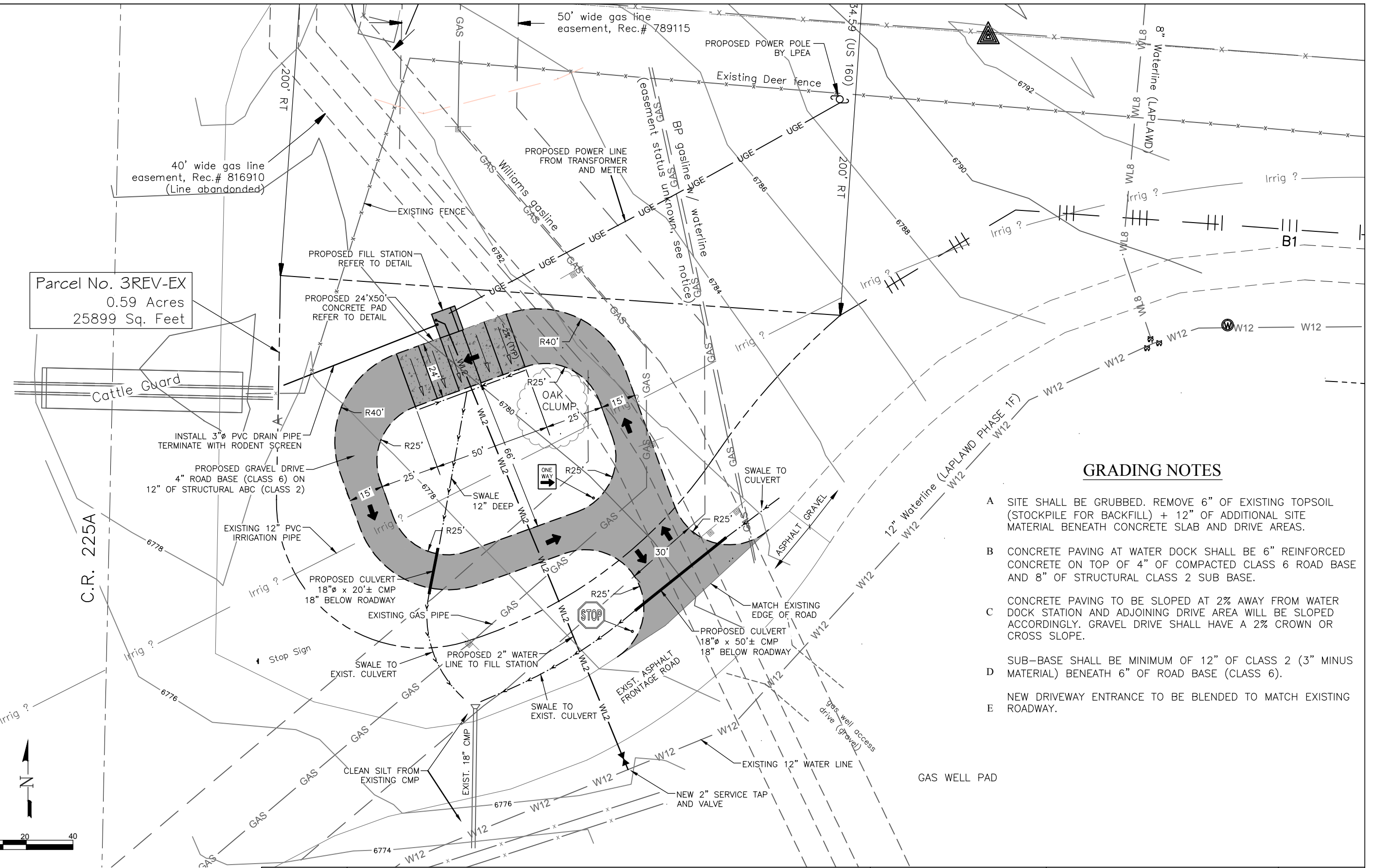
**HARRIS WATER  
ENGINEERING INC.**  
954 East Second Ave.  
Durango, Co. 81303  
970-259-1028

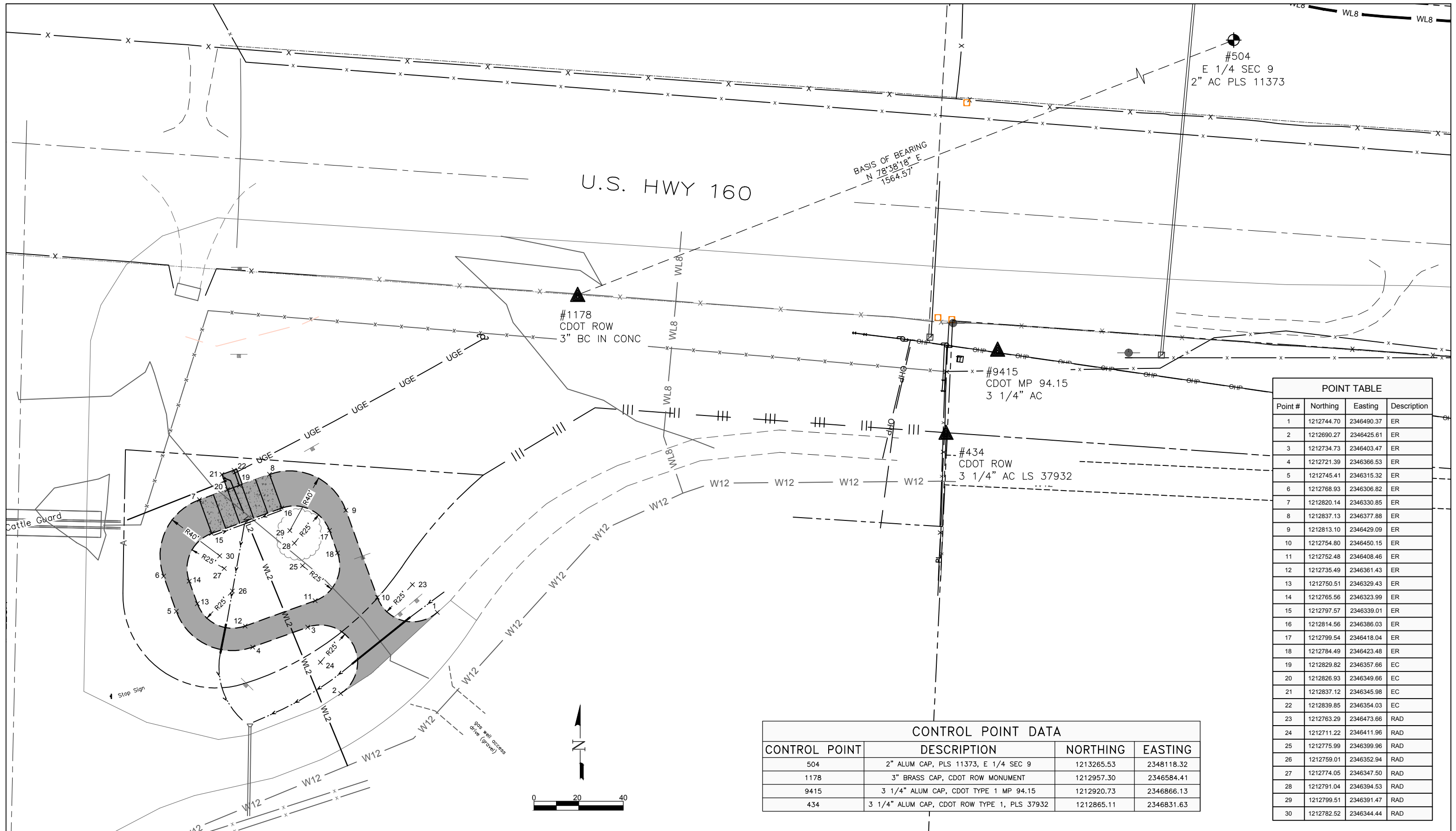
DATE: 9/6/2018  
DRAWN BY: RP  
CHECKED BY: BS

SHEET  
3 OF 6

### GRADING NOTES

- A SITE SHALL BE GRUBBED. REMOVE 6" OF EXISTING TOPSOIL (STOCKPILE FOR BACKFILL) + 12" OF ADDITIONAL SITE MATERIAL BENEATH CONCRETE SLAB AND DRIVE AREAS.
- B CONCRETE PAVING AT WATER DOCK SHALL BE 6" REINFORCED CONCRETE ON TOP OF 4" OF COMPACTED CLASS 6 ROAD BASE AND 8" OF STRUCTURAL CLASS 2 SUB BASE.
- C CONCRETE PAVING TO BE SLOPED AT 2% AWAY FROM WATER DOCK STATION AND ADJOINING DRIVE AREA WILL BE SLOPED ACCORDINGLY. GRAVEL DRIVE SHALL HAVE A 2% CROWN OR CROSS SLOPE.
- D SUB-BASE SHALL BE MINIMUM OF 12" OF CLASS 2 (3" MINUS MATERIAL) BENEATH 6" OF ROAD BASE (CLASS 6).
- E NEW DRIVEWAY ENTRANCE TO BE BLENDED TO MATCH EXISTING ROADWAY.





POINT TABLE			
Point #	Northing	Easting	Description
1	1212744.70	2346490.37	ER
2	1212690.27	2346425.61	ER
3	1212734.73	2346403.47	ER
4	1212721.39	2346366.53	ER
5	1212745.41	2346315.32	ER
6	1212768.93	2346306.82	ER
7	1212820.14	2346330.85	ER
8	1212837.13	2346377.88	ER
9	1212813.10	2346429.09	ER
10	1212754.80	2346450.15	ER
11	1212752.48	2346408.46	ER
12	1212735.49	2346361.43	ER
13	1212750.51	2346329.43	ER
14	1212765.56	2346323.99	ER
15	1212797.57	2346339.01	ER
16	1212814.56	2346386.03	ER
17	1212799.54	2346418.04	ER
18	1212784.49	2346423.48	ER
19	1212829.82	2346357.66	EC
20	1212826.93	2346349.66	EC
21	1212837.12	2346345.98	EC
22	1212839.85	2346354.03	EC
23	1212763.29	2346473.66	RAD
24	1212711.22	2346411.96	RAD
25	1212775.99	2346399.96	RAD
26	1212759.01	2346352.94	RAD
27	1212774.05	2346347.50	RAD
28	1212791.04	2346394.53	RAD
29	1212799.51	2346391.47	RAD
30	1212782.52	2346344.44	RAD

CONTROL POINT DATA			
CONTROL POINT	DESCRIPTION	NORTHING	EASTING
504	2" ALUM CAP, PLS 11373, E 1/4 SEC 9	1213265.53	2348118.32
1178	3" BRASS CAP, CDOT ROW MONUMENT	1212957.30	2346584.41
9415	3 1/4" ALUM CAP, CDOT TYPE 1 MP 94.15	1212920.73	2346866.13
434	3 1/4" ALUM CAP, CDOT ROW TYPE 1, PLS 37932	1212865.11	2346831.63

ELEVATIONS DERIVED FROM COUNTY GIS MAPS AND ARE FOR INFORMATIONAL PURPOSES ONLY. FIELD CONDITIONS MAY VARY.

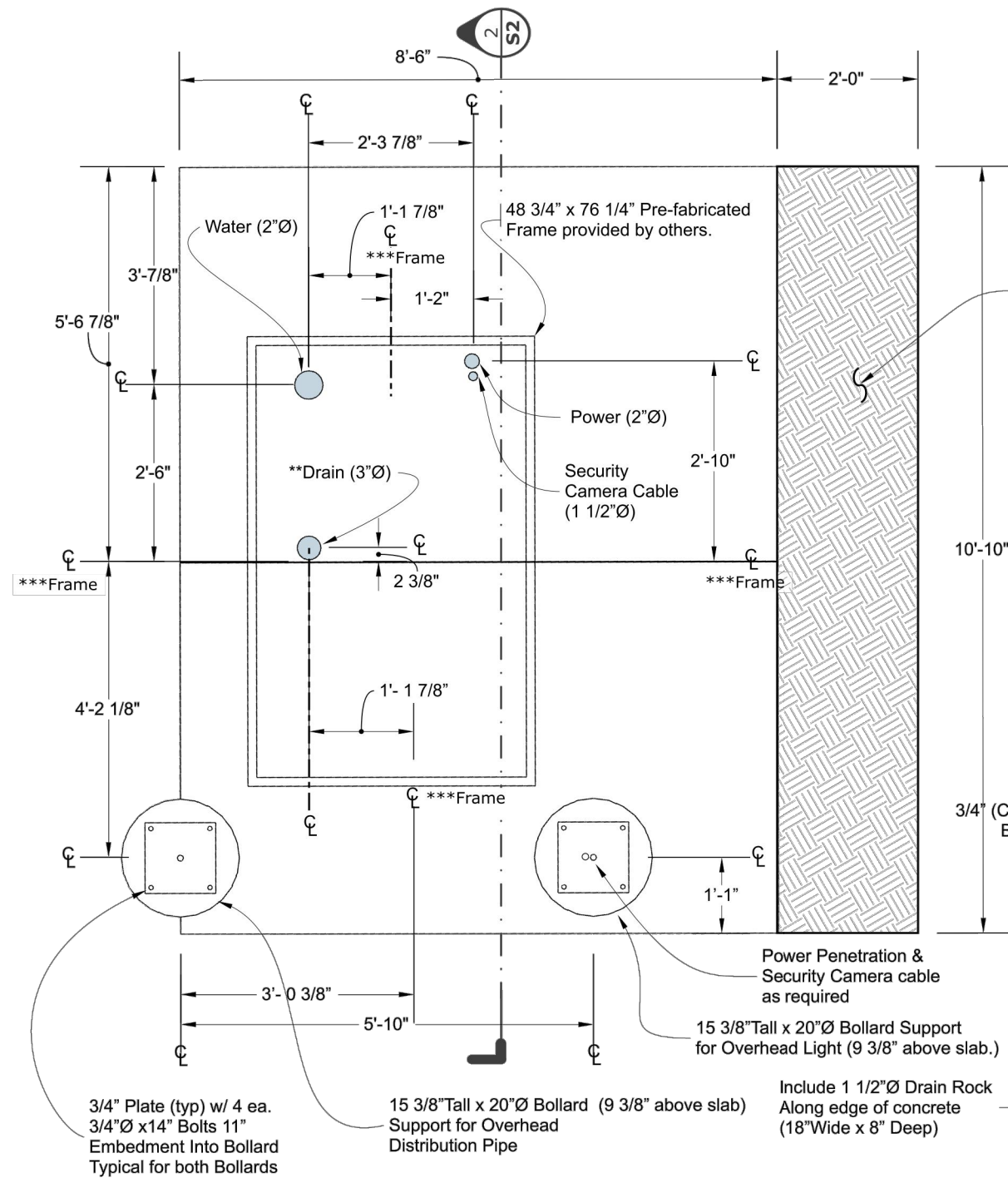


LA PLATA ARCHULETA WATER DISTRICT  
 WATER HAUL STATION  
 PROJECT CONTROL/STAKEOUT

CALL UTILITY NOTIFICATION  
 CENTER OF COLORADO  
 1-800-922-1987 OR (811)  
 CALL 3 BUSINESS DAYS PRIOR  
 TO ANY CONSTRUCTION.

HARRIS WATER  
 ENGINEERING INC.  
 954 East Second Ave.  
 Durango, Co. 81303  
 970-259-1028

DATE: 9/6/2018  
 DATE: RP  
 DRAWN BY: RP  
 CHECKED BY: BS



**Haul Station Slab Detail Plan View**

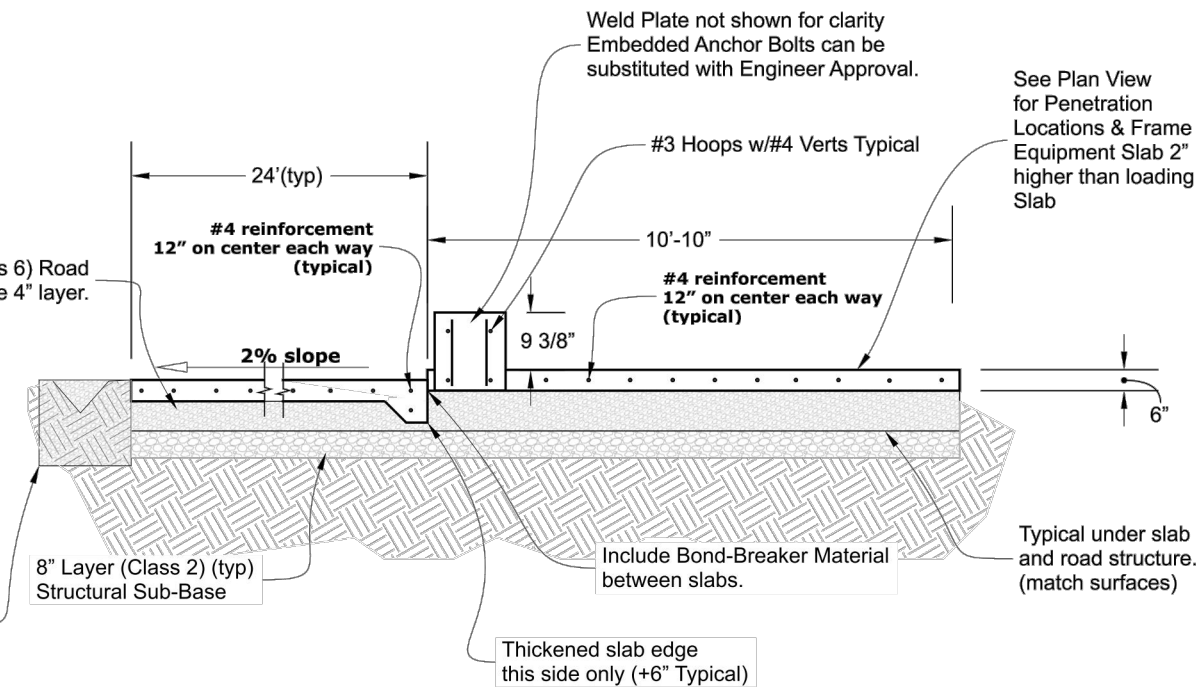
scale: 1/2"=1'

1  
S2

**\*\* Install 3" drain pipe from location shown to west property drainage daylight.**

**\*\*\* Mark centerline of frame on concrete for placement of pre-fabricated equipment frame.**

**Add 2 foot extension of compacted Road base next to equipment slab**



**Concrete Section**

scale: 1/4"=1'

2  
S2

**Finish Notes:**  
**Haul Station Slab: Standard Trowel Finish (Smooth)**  
**Loading Slab Broom Finish for texture.**  
**Apply Curing compound to all exposed concrete surfaces.**  
**Slope all concrete on equipment slab (inside building footprint) to drain.**



LA PLATA ARCHULETA WATER DISTRICT  
 WATER HAUL STATION  
 WATER STATION DETAILS

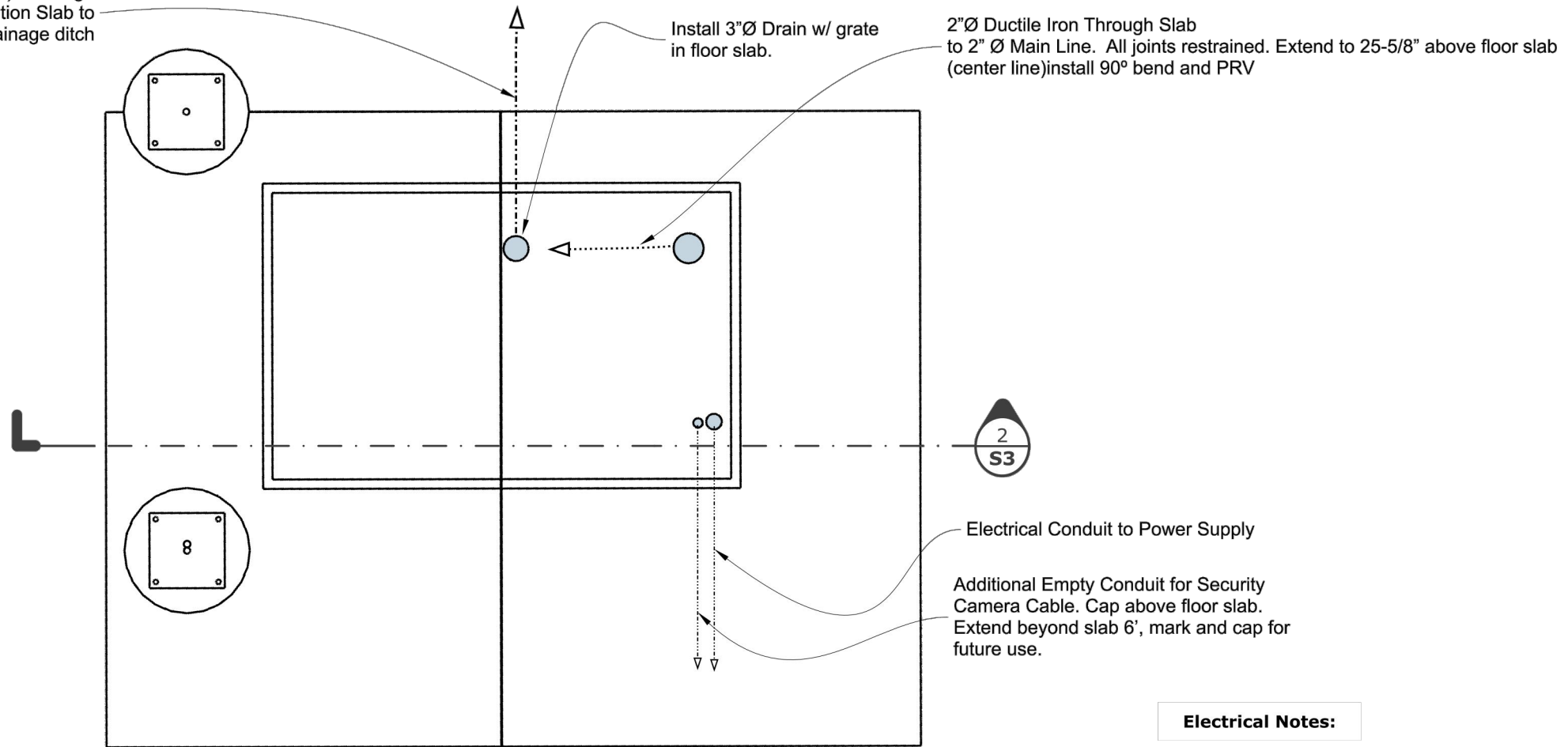
CALL UTILITY NOTIFICATION  
 CENTER OF COLORADO  
 1-800-922-1987 OR (811)  
 CALL 3 BUSINESS DAYS PRIOR  
 TO ANY CONSTRUCTION.

**HARRIS WATER ENGINEERING INC.**  
 954 East Second Ave.  
 Durango, Co. 81303  
 970-259-1028

DATE: 8/20/2018  
 DATE:  
 DRAWN BY:  
 CHECKED BY:

SHEET  
 5 OF 6

Connect 3"Ø PVC (Schedule 40) Drainage Line from Under Haul Station Slab to Daylight on west drainage ditch

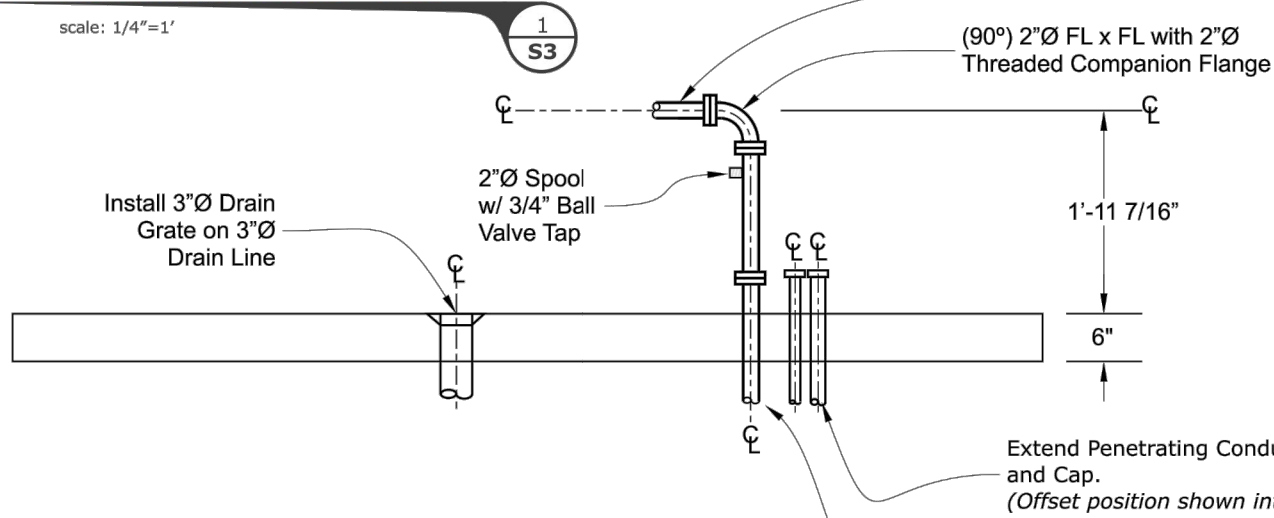


**Electrical Notes:**

- ◆ Install Motion Activated LED Area Light Mounted on 15 foot Pole. (120V typical) On Bollard Shown.
- ◆ Light shall be GLEON-AF-01-LED-E1 Galleon LED
- ◆ Run power conduit in center of bollard to Equipment mounting slab.
- ◆ Power Supply by LPEA.
- ◆ Add conduit for security camera

**Slab Penetration Details - Plan**

scale: 1/4"=1'

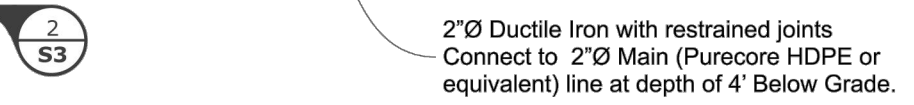


**Notes:**

- ◆ Install Pipe Support As needed.
- ◆ Equipment Frame and Bollard/ Pedestal Not shown in section for clarity.

**Slab Penetration Details - Section**

scale: 1/2"=1'



LA PLATA ARCHULETA WATER DISTRICT  
WATER HAUL STATION  
EQUIPMENT PIPING DETAILS

CALL UTILITY NOTIFICATION  
CENTER OF COLORADO  
1-800-922-1987 OR (811)  
CALL 3 BUSINESS DAYS PRIOR  
TO ANY CONSTRUCTION.

HARRIS WATER  
ENGINEERING INC.  
954 East Second Ave.  
Durango, Co. 81303  
970-259-1028